

# National Forests in Alabama

## Recreation Fee Program Accomplishment Highlights 2022

### Payne Lake Shines

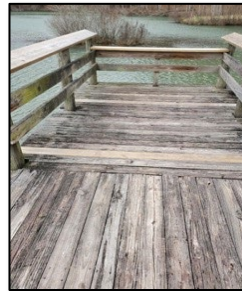
The bathhouses at Payne Lake Recreation Area are just one of the great amenities available to visitors. In 2022, new LED lighting with sensors were installed, reducing electrical expenses while still providing light during evening and early morning hours. Freshly painted surfaces throughout the bathhouses provided an extra shine. This helps with cleaning and maintaining the facilities to a high standard. Some windows were replaced with new Lexan material to provide for more durability. Recreation fee funds in the amount of \$1,850 were used to complete these improvements.



*Payne Lake Recreation Area bathhouses shine with new LED lighting and fresh paint*

### Brushy Lake Pier Improvements

Forest staff and interns completed needed repairs to the Brushy Lake pier. They were able to replace several rotten surface boards and all the top railing boards. This improvement helps maintain infrastructure and improve safety for visitors to recreation areas. Recreation fee funds in the amount of \$1,000 were used to purchase materials and supplies for these repairs.



*Brushy Lake Recreation Area pier improvements included replacing rotten boards and installing new upper top rails*

### Recreation Fee Dollars

Recreation fee dollars are an investment in outdoor recreation. They support and enhance:

- Public safety
- Recreation site maintenance and improvements
- Educational experiences
- Informational wayside exhibits
- Youth programs and partnerships
- Interpretive programs

Current and future generations benefit as 80-95% of the funds are reinvested in the facilities and services that visitors enjoy, use, and value.

### Preserving Health and Safety

Maintaining underbrush and hazardous tree removal are key components in maintaining forest health and safety standards at recreation sites across the National Forests in Alabama. These activities are accomplished by using Forest Service employees and tree service contractors to remove hazardous trees. \$2,500 of recreation fee funds collected were used for this project in 2022.

*Hazard tree removal around recreational areas improves safety for visitors*



## Other Accomplishments

- Plumbing and electrical repairs completed at recreation areas across the forests.
- Main water line repaired at Payne Lake West Side Camping Loop (\$2,400).
- Conducted Law Enforcement operations, patrols and compliance checks at shooting ranges, day use sites and campgrounds.
- Signs purchased and installed at Open Pond and Blue Lake Recreation Areas (\$525).
- Funded forest recreation staff for lawn care maintenance and cleaning in conjunction with the recreation operations contract.
- Forest kiosks were updated and maintained with information related to recreation sites.
- Replaced gravel on 15 campsites at Payne Lake East Camping Loop.
- Safety zone established around Brushy Lake Recreation Area and repainted safety zone at Hurricane Shooting Range.

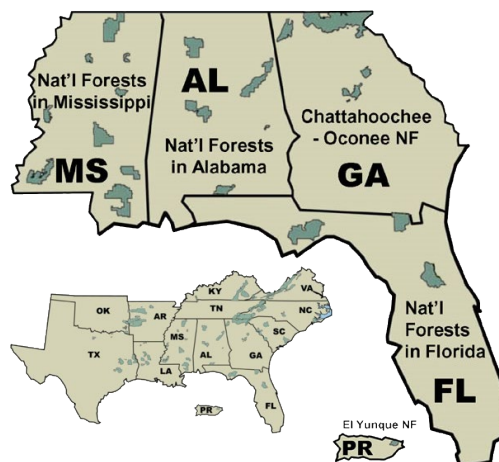


*Open Pond Campground provides a peaceful setting for visitors to relax and enjoy the outdoors*



*New signage and paint mark the safety zone established at Brushy Lake Recreation Area*

## Regional Map



## Revenue and Expenditures

Revenue*	Forest	Region
Recreation Fees	\$316,187	\$8,436,685
Special Uses	\$12,960	\$1,287,096
Interagency Passes	\$17,220	\$164,431
<b>Total</b>	<b>\$346,367</b>	<b>\$9,888,212</b>
Expenditures	Forest	Region
Repair and Maintenance	\$249,747	\$5,391,646
Visitor Services	\$13,890	\$1,483,234
Law Enforcement	\$14,581	\$112,357
Habitat Restoration	\$0	\$133,352
Fee Agreements	\$549	\$626
Collections/Overhead	\$27,082	\$780,479
<b>Total</b>	<b>\$305,849</b>	<b>\$7,901,694</b>

## Contacts

### National Forests in Alabama

#### Recreation Fee Program Contact

334-241-8128

Email: [brian.kennedy@usda.gov](mailto:brian.kennedy@usda.gov)

Online: [www.fs.usda.gov/alabama](http://www.fs.usda.gov/alabama)

### Regional Contact

404-347-2769

Email: [tiffany.p.williams@usda.gov](mailto:tiffany.p.williams@usda.gov)