

Unit Highlights

Visitors to this district can enjoy panoramic views from the shores of Kincaid Lake. The Kincaid Lake Recreation Area provides swimming, boating, picnicking, hiking, camping, and biking. Some activities are available year round. In the spring, the dog-woods and wild azaleas are spectacular. In the fall, the mixed hardwood-pine forest provides wonderfully contrasting scenery. The Kisatchie’s resident eagles may be spotted along the shore of Kincaid Lake or viewed year round on your cell phone at www.tiny.cc/knfeagle.

Surrounding Areas

Valentine Lake, which was constructed by the Civilian Conservation Corps, offers a beautiful setting for picnicking and fishing. Bikers and hikers can enjoy numerous trails around Kincaid Lake. The Wild Azalea National Recreation Trail’s 26-mile length offers day hikes along several segments or a two-day hike for those who want to get away for a while. The Claiborne Multiple-Use Trails offer over 88 miles of motorized, horse, hiking, and biking use.

For More Information

Calcasieu Ranger District
9912 Highway 28 West
Boyce, Louisiana 71409
Phone: (318) 793-9427 or
1-(800) 225-9733
www.fs.usda.gov/kisatchie
OHV Hotline: (318) 473 - 7069
Hours: 7:30 a.m.—4:00 p.m. M-F

Calcasieu Ranger District
Kisatchie National Forest
EVANGELINE UNIT



Kincaid Lake Day-Use Area



Forest Service
U.S. DEPARTMENT OF AGRICULTURE

Recreational Information

General

This unit encompasses 97,000 acres and is situated near Alexandria, Louisiana in Rapides Parish.

Developed Recreation

The unit administers three developed recreation areas that are designated fee areas; Kincaid Lake, Valentine Lake and Loran Camp/Claiborne Trailhead.

Day Use Fees:

Kincaid Beach/Picnic Area: \$5.00/vehicle
Claiborne Trails: \$5.00/per operator (OHV, horse, mountain bike)
Kincaid Boat Ramps: \$5.00/boat
Kincaid Group Shelter: \$35-\$75.00, call for reservations (open/close 8 a.m.-8 p.m.)

Camping Fees:

Valentine Single: \$10.00/night
Kincaid Single: \$25.00/night (includes \$4.00 utility fee)
Kincaid Double: \$30.00/night (includes \$4.00 utility fee)
Kincaid Primitive: \$10.00/night (no electric or water)
Loran Camp: \$10.00/night

The unit offers over 140 miles of dispersed trails throughout upland pine, mixed hard-wood/pine, and bottomland ecosystems.

REPORT WOODS ARSON:
(855) 452-5323
24 HOURS

Recreational Opportunities and Facilities on the Calcasieu Ranger District's Evangeline Unit



	Day-Use Picnic Area	Trailers and Campers	Recreational Vehicles	Group Use Picnic Area	Sanitary Dump Station	Electrical Hookups	Fire Rings / Grills	Swimming	Bank Fishing	Pier Fishing	Water Fishing	Non-motorized Boating	Motorized Boat Launch	Non-Motorized Boat Ramp	Hiking	Interpretive	Off Road Vehicles	Flush Toilets	Vault Toilets	Drinking Water	Trash Disposal
Kincaid Lake Recreation Complex																					
Kincaid Lake Day-Use Area	\$5	✓						✓	✓	✓		✓	✓	✓	✓	✓	✓			✓	✓
Kincaid Lake Group-Use Area ⁽¹⁾	Call		✓				✓	✓	✓	✓		✓	✓	✓	✓	✓	✓			✓	✓
Kincaid Lake Campground A ⁽²⁾	\$25			✓	✓	✓	✓	✓	✓	✓	✓	✓	✓	✓	✓	✓	✓			✓	✓
Kincaid Lake Campground B ⁽²⁾	\$25			✓	✓	✓	✓	✓	✓	✓	✓	✓	✓	✓	✓	✓	✓			✓	✓
West Kincaid Lake Boat Launch	\$5										✓	✓	✓	✓	✓	✓	✓			✓	✓
East Kincaid Lake Boat Launch	\$5										✓		✓	✓	✓	✓	✓			✓	✓
Kincaid Lake Primitive Camp ⁽³⁾	\$10					✓										✓	✓			✓	
Kincaid Lake Recreation Trails ⁽⁴⁾	Free															✓	✓				
Valentine Lake Recreation Complex																					
Valentine Northshore Campground	\$10	✓		✓	✓	✓			✓		✓	✓		✓		✓	✓			✓	✓
Valentine Day-Use Area	Free	✓									✓	✓		✓		✓	✓			✓	✓
Other Recreation Areas																					
Wild Azalea National Recreation Trail	Free															✓	✓				
Camp Claiborne Multi-Use Trails ⁽⁵⁾	\$5															✓	✓			✓	
Loran/Claiborne Trailhead Camp	\$10			✓	✓	✓	✓		✓	✓									✓		✓
Evangeline Camp	Free					✓										✓	✓			✓	
Boy Scout Camp	Free			✓	✓	✓	✓														
Ahtus Melder Camp	Free			✓	✓	✓	✓												✓		

(1)\$35-\$75 for Group Shelter, call for reservations. (2) Double Units = \$30 daily fee. (3) Primitive camping includes access to day-use area and bathhouse facilities.

(4) Kincaid Lake Recreation Trails have no fees unless parking in a fee required area. (5) No trail-use fee for hikers.

Other Essentials

The Evangeline Unit has become a very popular area for various hunting and fishing opportunities. Contact the Calcasieu District office for dates and regulations. Boating opportunities are accessible from two separate developed boat launches located on Kincaid Lake, the East Boat Launch located off Messina Road and the West Boat Launch located inside the Kincaid Lake Recreation Area. Non-motorized boating is also available on Valentine Lake.

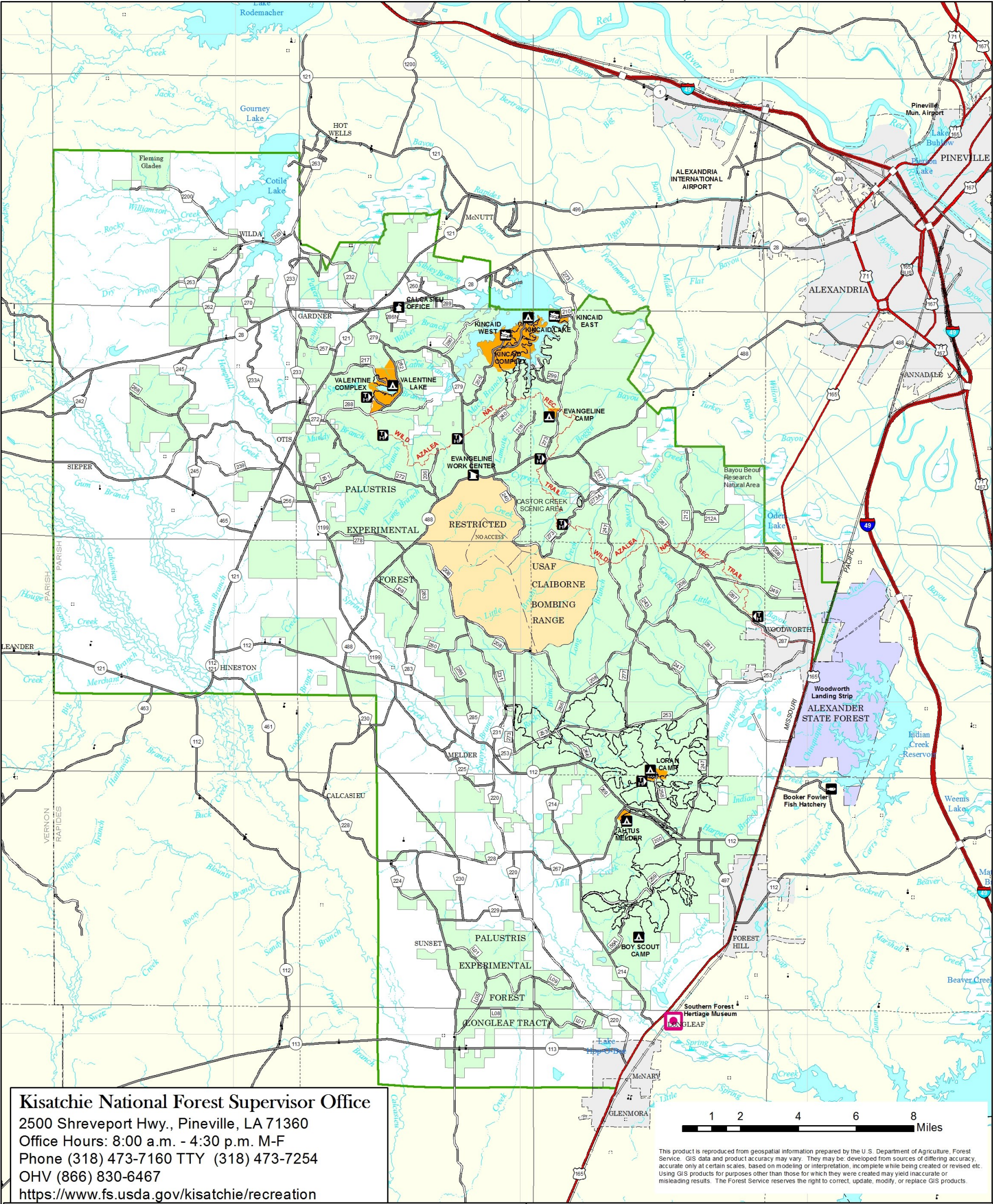
In accordance with Federal civil rights law and U.S. Department of Agriculture (USDA) civil rights regulations and policies, the USDA, its Agencies, offices, and employees, and institutions participating in or administering USDA programs are prohibited from discriminating based on race, color, national origin, religion, sex, disability, age, marital status, family/parental status, income derived from a public assistance program, political beliefs, or reprisal or retaliation for prior civil rights activity, in any program or activity conducted or funded by USDA (not all bases apply to all programs). Remedies and complaint filing deadlines vary by program or incident. Persons with disabilities who require alternative means for communication of program information (e.g., Braille, large print, audiotape, American Sign Language, etc.) should contact the responsible Agency or USDA's TARGET Center at (202) 720-2600 (voice and TTY) or contact USDA through the Federal Relay Service at (800) 877-8339. Additionally, program information may be made available in languages other than English. USDA Forest Service is an equal opportunity provider and employer.



CALCASIEU RANGER DISTRICT - EVANGELINE UNIT



9912 LA Highway 28 West, Boyce, Louisiana 71409
Office Hours: 7:30 a.m. - 4:00 p.m. M-F Phone (318) 793-9427



Legend

- | | | |
|---------------------------------|---------------------------|-------------------------|
| RD OFFICE - FS | STREAM | WATER |
| WORK CENTER | BDY - USFS DISTRICT | STATE LAND - PUBLIC USE |
| BOAT RAMP | US HWY | URBAN AREA |
| TRAILHEAD | STATE HWY | RECREATION AREA |
| CAMPGROUND | PARISH ROAD | RESTRICTED ACCESS |
| FISH HATCHERY | FOREST SYSTEM ROAD | USDA FOREST SERVICE |
| SOUTHERN FOREST HERITAGE MUSEUM | TRAIL | |
| | TRAIL - NATL REC / SCENIC | |



Kisatchie National Forest Vicinity Map

- Other Ranger Districts
- Calcasieu Ranger District (Evangeline Unit)
- Louisiana