

Unit Highlights

Visitors to this Ranger District can enjoy the picturesque setting at Stuart Lake Complex, hike or bike along the Glenn Emery Trail, ride an ATV on Camp Livingston Multiple-Use Trails, or hunt the many game seasons. Viewing wildlife at Iatt Lake Observation Pier or at the Catahoula Butterfly Garden is also available.

Surrounding Areas

Stuart Lake was originally created as an irrigation reservoir for the Civilian Conservation Corps-constructed Stuart Nursery. This peaceful 5-acre lake is surrounded by a mixed pine/hardwood forest setting. Recreation opportunities offered at Stuart Lake include picnicking, swimming, fishing, trail hiking, biking, and a separate group picnic shelter. Trails include the Glenn Emery Hiking Trail (~4 miles) and two OHV trails at Camp Livingston Multiple-Use Trail System. The Catahoula National Wildlife Management Preserve is located on both the Catahoula and the Winn Ranger Districts.

For More Information

Catahoula Ranger District
5325 Louisiana Highway 8
Bentley, Louisiana 71407-9726
Phone: (318) 765-3554
www.fs.usda.gov/kisatchie
OHV Hotline: (318) 473-7069
Hours: 8:00 a.m.- 4:30 p.m. M-F

Catahoula Ranger District
Kisatchie National Forest



Stuart Lake Day-Use Area



Forest Service
U.S. DEPARTMENT OF AGRICULTURE

Recreational Information

General

This District encompasses over 121,500 acres. Because it is situated near Pineville, Ball, and Tioga, it is a very popular district for north Rapides and Grant Parishes.

Developed Recreation

The District administers one developed recreation complex that is a designated fee area; Stuart Lake Recreation Complex.

Day Use Fees:
\$5.00/vehicle
Stuart Lake Group Shelter: \$35-75.00, call for shelter reservations.

Camping Fees:
Single Unit: \$15/night
Double Unit: \$20.00/night
(checkout time is 2:00 p.m.)

The Catahoula is a very popular area for various hunting opportunities. State licenses and regulations apply. An additional permit issued by the forest is required if hunting in the Catahoula National Wildlife Management Preserve.

REPORT WOODS ARSON:
(855) 452-5323
24 HOURS

Recreational Opportunities and Facilities on the Catahoula Ranger District



	Day-Use Picnic Area	Group-Use Picnic Area	Trailers and Campers	Recreational Vehicles	Tents	Water Hookups	Sanitary Dump Station	Fire Rings/Grills	Swimming	Bank Fishing	Pier Fishing	Water Skiing	Non-motorized Boating	Motorized Boat Launch	Non-Motorized Boat Ramp	Hiking	Biking	Interpretive	Horse	Off Road Vehicles	Flush Toilets	Vault Toilets	Showers	Drinking Water	Trash Disposal	
Stuart Lake Recreation Complex																										
Stuart Lake Day-Use Site	\$5	✓							✓	✓	✓	✓			✓			✓	✓				✓		✓	✓
Stuart Lake Group-Use Area ⁽¹⁾	Call		✓				✓		✓	✓	✓	✓			✓			✓	✓				✓		✓	✓
Stuart Lake Campground ⁽²⁾	\$15			✓	✓	✓			✓	✓	✓	✓			✓			✓	✓				✓		✓	✓
Other Recreation Areas																										
Original LSU Site (located at Supervisor's Office at 2500 Shreveport Hwy, Pineville)	Free	✓															✓		✓							
Butterfly and Hummingbird Garden	Free	✓															✓		✓					✓	✓	
Glenn Emery Hiking Trail	Free																✓	✓								
Iatt Lake Viewing Area	Free	✓												✓		✓			✓				✓		✓	
Little Creek Trailhead (Trail) ⁽³⁾	\$5																✓	✓		✓	✓		✓		✓	
Hickman Trailhead (Trail) ⁽³⁾	\$5																✓	✓		✓	✓		✓		✓	
Bankston Hunter Camp	Free					✓	✓																✓			
Highway 472 Hunter Camp	Free					✓	✓																✓			
Pearson Hunter Camp	Free					✓	✓																✓			
Saddle Bayou Hunter Camp	Free					✓	✓																✓			

(1) \$35-\$75 for Group Shelter, call for reservations. (2) Double Units = \$20 daily fee. (3) No trail use fees for hikers.

The Catahoula Butterfly and Hummingbird Garden

Volunteers are always in high demand to maintain the beautiful butterfly and hummingbird garden near the Catahoula Ranger District Office. To be part of this effort, please contact the Catahoula Ranger District at (318)765-3554.

Iatt Lake Viewing Area

Visitors to Iatt Lake Viewing Area can venture over the lily-covered portion of the lake on the elevated boardwalk. Migratory birds, beavers, and other resident animals can often be viewed from the platform. The area is also equipped with a canoe launch, picnic tables, and restrooms.

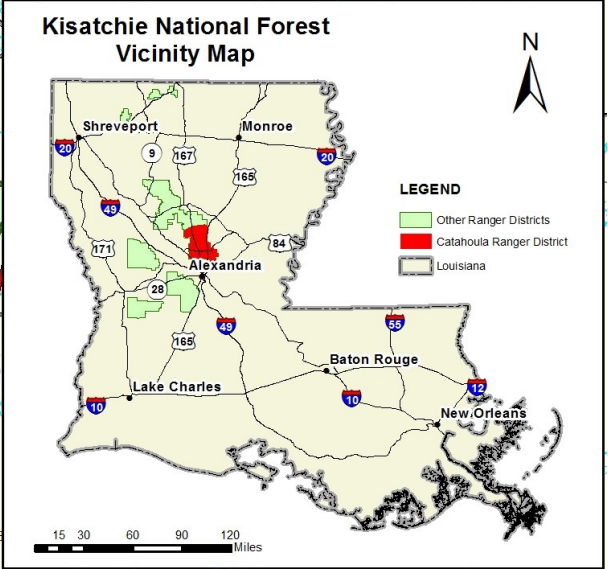
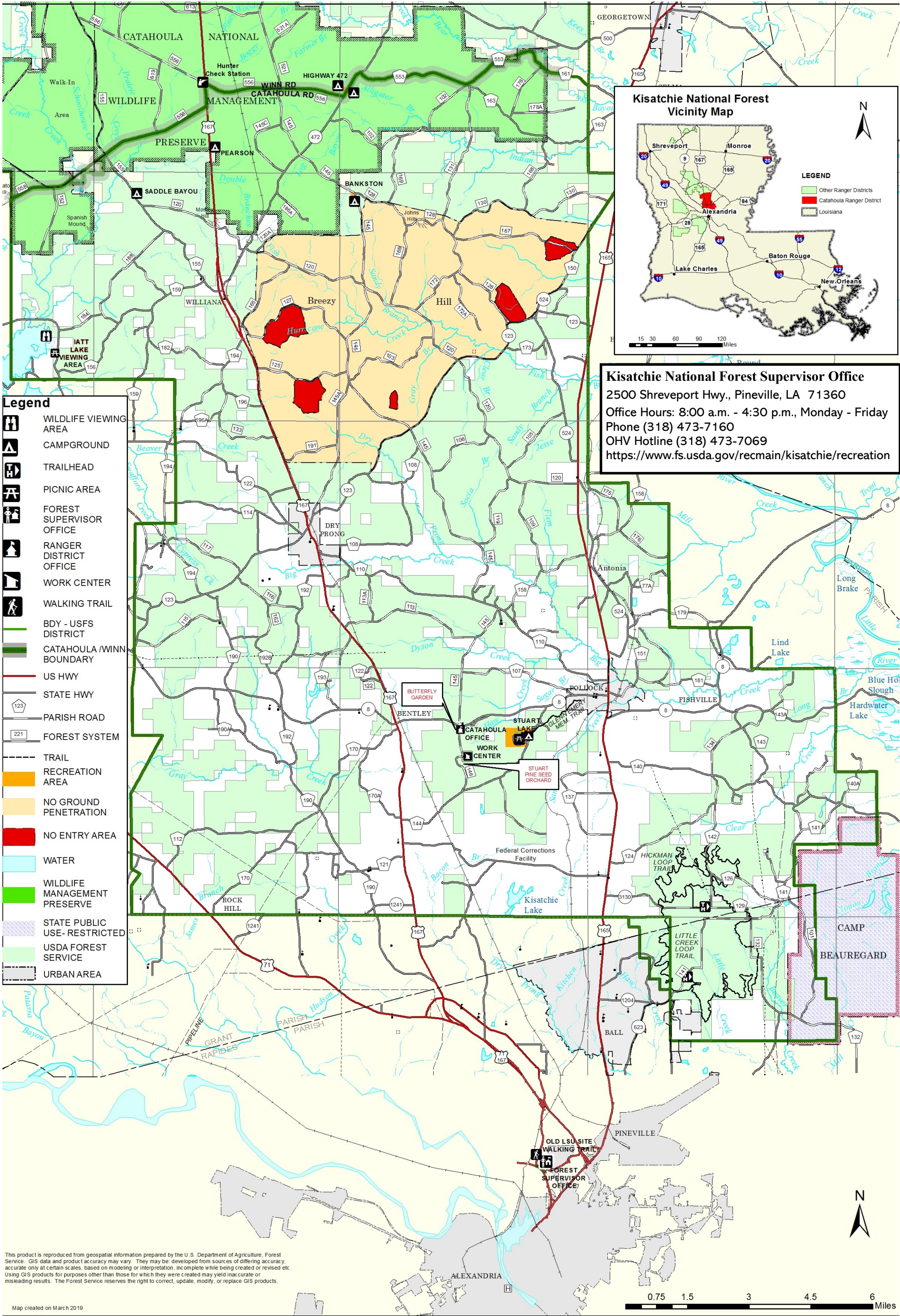
In accordance with Federal civil rights law and U.S. Department of Agriculture (USDA) civil rights regulations and policies, the USDA, its Agencies, offices, and employees, and institutions participating in or administering USDA programs are prohibited from discriminating based on race, color, national origin, religion, sex, disability, age, marital status, family/parental status, income derived from a public assistance program, political beliefs, or reprisal or retaliation for prior civil rights activity, in any program or activity conducted or funded by USDA (not all bases apply to all programs). Remedies and complaint filing deadlines vary by program or incident. Persons with disabilities who require alternative means of communication for program information (e.g., Braille, large print, audiotape, American Sign Language, etc.) should contact the responsible Agency or USDA's TARGET Center at (202) 720-2600 (voice and TTY) or contact USDA through the Federal Relay Service at (800)877-8339. Additionally, program information may be made available in languages other than English.

USDA Forest Service is an equal opportunity provider and employer.

CATAHOULA RANGER DISTRICT

5325 LA Highway 8, Bentley, LA 71407

Office Hours: 8:00 a.m. - 4:30 p.m. M-F Phone (318) 765-3554 or (318) 765-3555



Kisatchie National Forest Supervisor Office
2500 Shreveport Hwy., Pineville, LA 71360
Office Hours: 8:00 a.m. - 4:30 p.m., Monday - Friday
Phone (318) 473-7160
OHV Hotline (318) 473-7069
<https://www.fs.usda.gov/recmain/kisatchie/recreation>

This product is reproduced from geospatial information prepared by the U.S. Department of Agriculture, Forest Service. GIS data and product accuracy may vary. They may be developed from sources of differing accuracy, accurate only at certain scales, based on modeling or interpretation, incomplete while being created or revised etc. Using GIS products for purposes other than those for which they were created may yield inaccurate or misleading results. The Forest Service reserves the right to correct, update, modify, or replace GIS products.