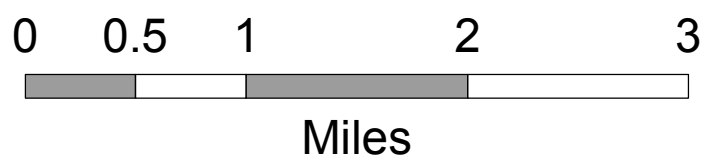


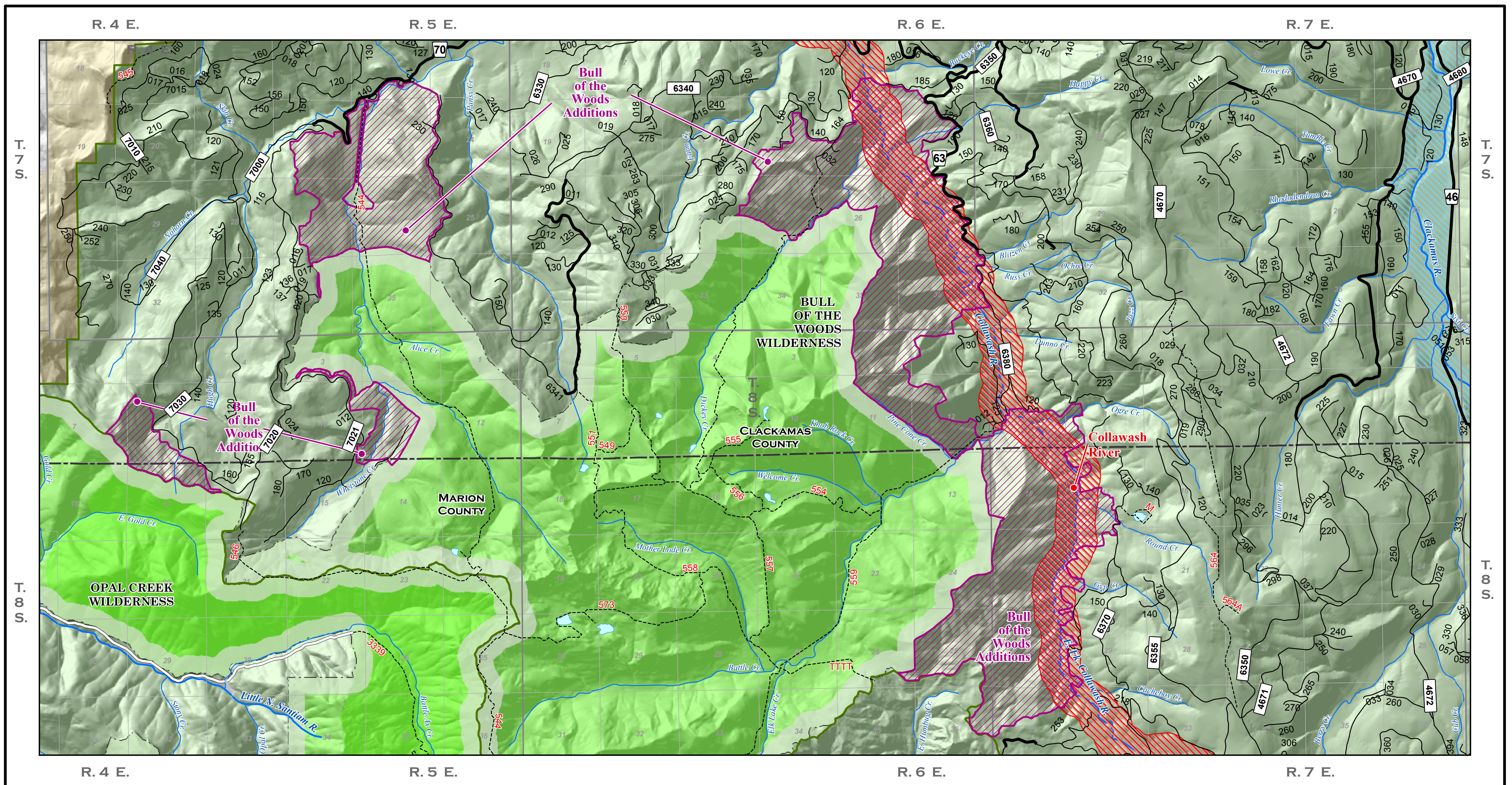
Bull of the Woods Wilderness - Bull of the Woods Additions

Prepared at the request of U. S. Senator Wyden - July 16, 2007

- | Additions | Existing US Forest Service | Base Data |
|-------------------|----------------------------|------------------|
| Bull of the Woods | Wilderness | County Lines |
| | Lakes | |
| | River | |
| | Creeks | |
| | Trails Trails: 545 | |
| | FS Paved Roads | Arterials: 70 |
| | All Other FS Roads | Collectors: 7040 |
| | | Locals: 240 |



The reliability or suitability of this information for a particular purpose cannot be guaranteed. The data and product accuracy may vary due to compilation from various sources, including modeling and interpretation, and may not meet National Map Accuracy Standards. This information may be updated, corrected, or otherwise modified without notification.



Bull of the Woods Wilderness - Bull of the Woods Additions

Prepared at the request of U. S. Senator Wyden - July 16, 2007

- | Additions | Existing US Forest Service | Base Data |
|------------------------|----------------------------|--------------------|
| Bull of the Woods | Mt. Hood NF | County Lines |
| Wild and Scenic Rivers | Wilderness | Private Land |
| | Wild and Scenic Rivers | BLM Lands |
| | Lakes | FS Paved Roads |
| | River | All Other FS Roads |
| | Creeks | Collectors: 7040 |
| | Trails Trails: 545 | Arterials: 70 |
| | | Locals: 170 |



The reliability or suitability of this information for a particular purpose cannot be guaranteed. The data and product accuracy may vary due to compilation from various sources, including modeling and interpretation, and may not meet National Map Accuracy Standards. This information may be updated, corrected, or otherwise modified without notification.