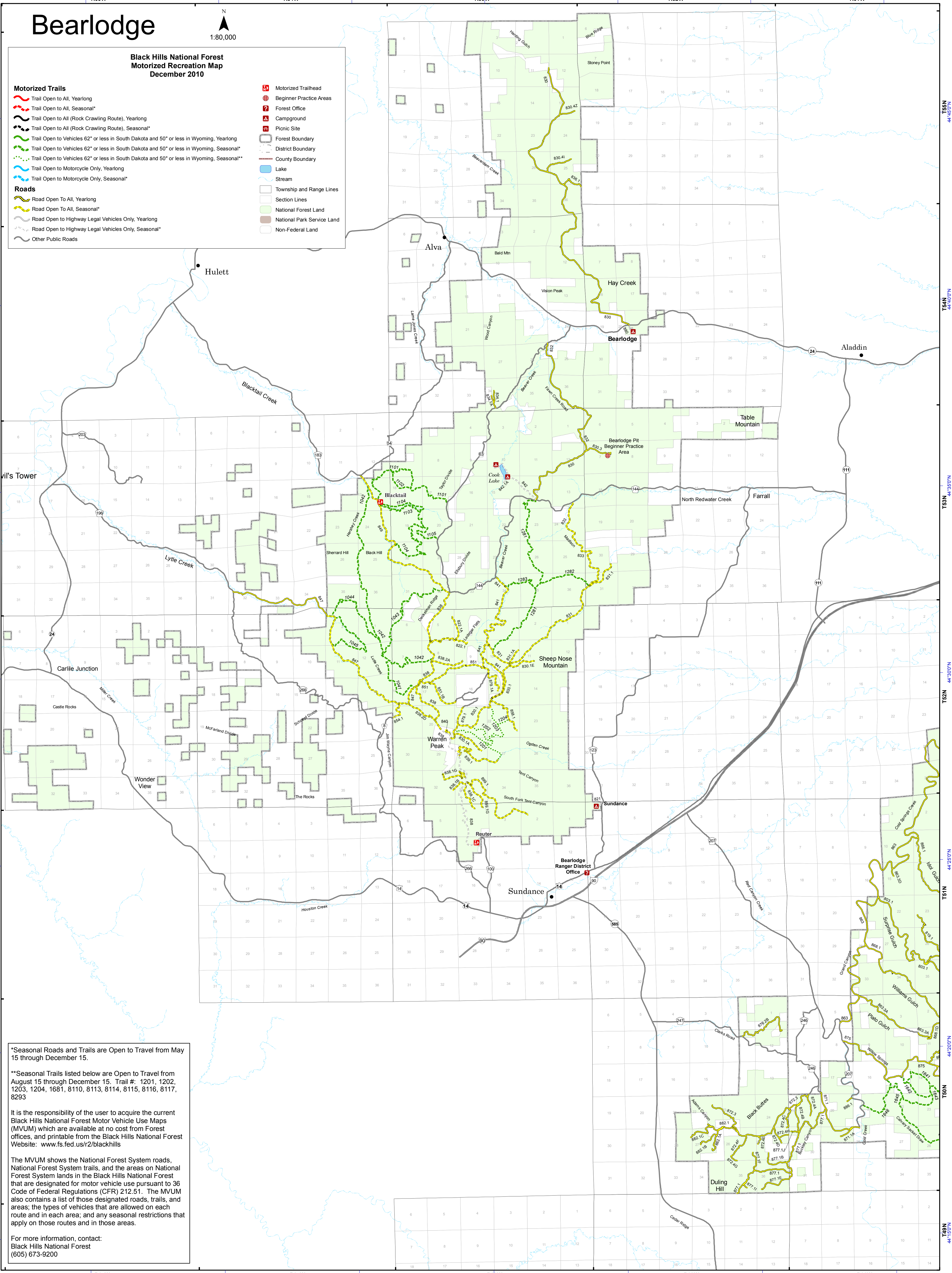


Bearlodge

**Black Hills National Forest
Motorized Recreation Map
December 2010**

- Motorized Trails**
- Trail Open to All, Yearlong
 - Trail Open to All, Seasonal*
 - Trail Open to All (Rock Crawling Route), Yearlong
 - Trail Open to All (Rock Crawling Route), Seasonal*
 - Trail Open to Vehicles 62" or less in South Dakota and 50" or less in Wyoming, Yearlong
 - Trail Open to Vehicles 62" or less in South Dakota and 50" or less in Wyoming, Seasonal*
 - Trail Open to Motorcycle Only, Yearlong
 - Trail Open to Motorcycle Only, Seasonal*
- Roads**
- Road Open To All, Yearlong
 - Road Open To All, Seasonal*
 - Road Open to Highway Legal Vehicles Only, Yearlong
 - Road Open to Highway Legal Vehicles Only, Seasonal*
 - Other Public Roads
- Other Features**
- Motorized Trailhead
 - Beginner Practice Areas
 - Forest Office
 - Campground
 - Picnic Site
 - Forest Boundary
 - District Boundary
 - County Boundary
 - Lake
 - Stream
 - Township and Range Lines
 - Section Lines
 - National Forest Land
 - National Park Service Land
 - Non-Federal Land



*Seasonal Roads and Trails are Open to Travel from May 15 through December 15.

**Seasonal Trails listed below are Open to Travel from August 15 through December 15. Trail #: 1201, 1202, 1203, 1204, 1681, 8110, 8113, 8114, 8115, 8116, 8117, 8293

It is the responsibility of the user to acquire the current Black Hills National Forest Motor Vehicle Use Maps (MVUM) which are available at no cost from Forest offices, and printable from the Black Hills National Forest Website: www.fs.fed.us/r2/blackhills

The MVUM shows the National Forest System roads, National Forest System trails, and the areas on National Forest System lands in the Black Hills National Forest that are designated for motor vehicle use pursuant to 36 Code of Federal Regulations (CFR) 212.51. The MVUM also contains a list of those designated roads, trails, and areas; the types of vehicles that are allowed on each route and in each area; and any seasonal restrictions that apply on those routes and in those areas.

For more information, contact:
Black Hills National Forest
(605) 673-9200