

DUGOUT GULCH BOTANICAL TRAIL



Elevation: 4,000 to 4,600 feet

Length: 8 miles

Difficulty: Moderate

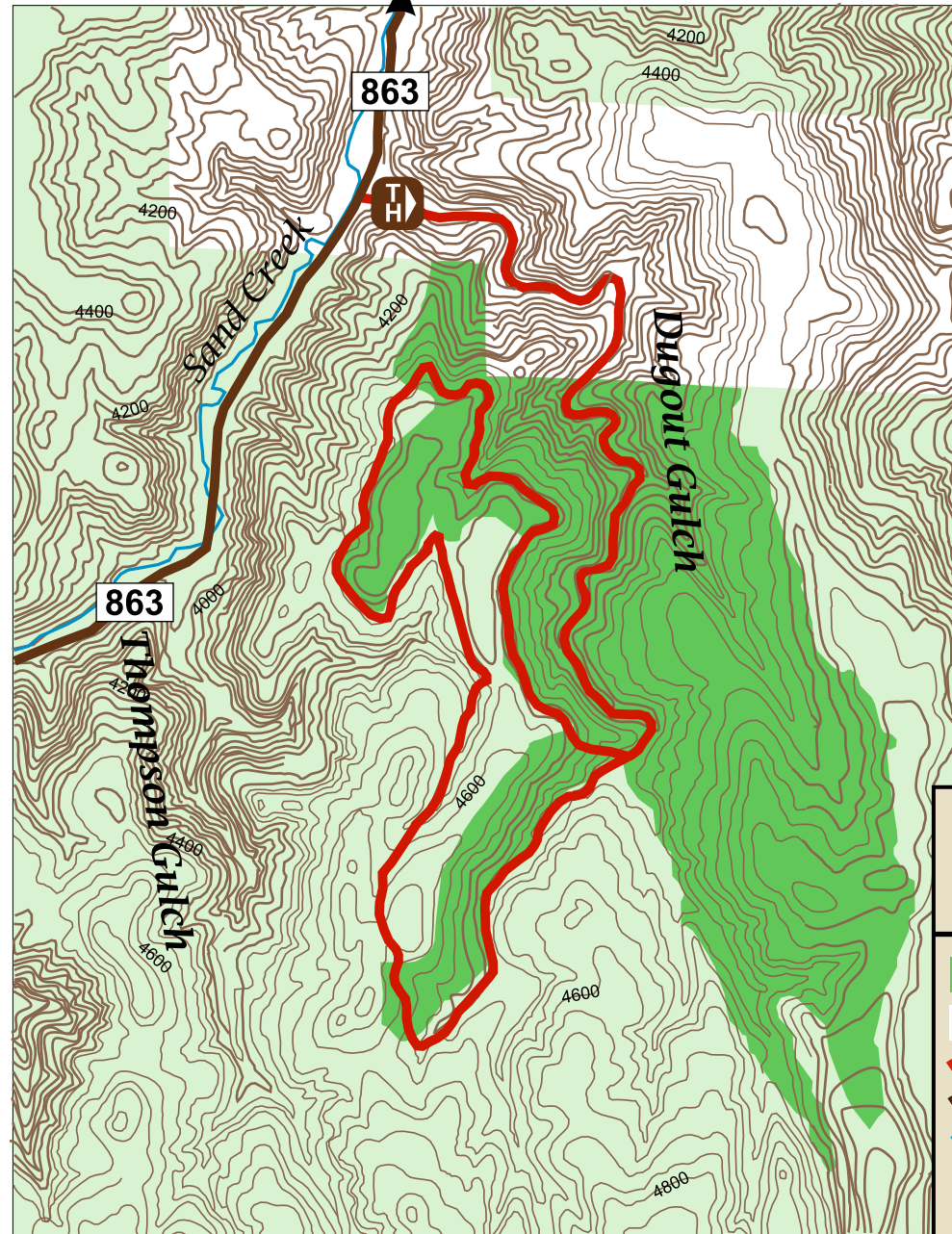
Location: Trailhead is approximately 5 miles south of Beulah, Wyoming, off of Highway 863.

This trail is maintained for hikers, horseback riders, and mountain bikers. No motorized use is allowed.

The trail meanders through stands of paper birch, ironwood, and hazelnut trees. Sheltered under the branches of these trees you can find several plant species including rattlesnake fern, common Solomon's seal, Canadian Enchanters's nightshade, and the oval-leaved milkweed. Several sedges including meadow sedge, fox-tail sedge and rosy sedge can also be found in the area.



5 miles
to Beulah



LEGEND

- Botanical Area
- Private Land
- Trail
- Road
- Creek
- Trailhead

General Information

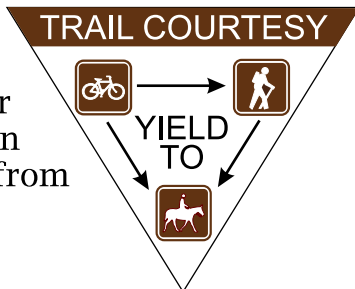
77 Maintained trails are marked with grey diamond trail blazers on trees or carsonite posts. Trail junctions are marked with brown signs with white lettering.

Extreme Weather
Clear sunny days can quickly turn into afternoon thunderstorms. Start hikes early and carry raingear.

Stream Water
Do not drink it! Each trail user should carry at least one quart of water.

Fire Safety
Be extra careful with fire. Protect this beautiful botanical area.

Bicyclists
Please alert others of your presence when approaching from behind.



Trail Ethics
Please don't cut across switchbacks or pioneer new trails.

Enjoy the National Forest, but please TREAD LIGHTLY and DON'T LITTER.

For more information please contact:

Bearlodge Ranger District
Highway 14 East
PO Box 680
Sundance, WY 82729
307-283-1361

Supervisor's Office
1019 N. 5th St.
Custer, SD 57730
(605) 673-9200
TTY (605) 673-9227



The United States Department of Agriculture (USDA) prohibits discrimination in its programs on the basis of race, color, national origin, gender, religion, age, disability, political beliefs, sexual orientation, and marital or family status. (Not all prohibited bases apply to all programs.) Persons with disabilities who require alternative means for communication of program information (Braille, large print, audiotape, etc.) Should contact USDA's TARGET Center at (202) 720-2600 (voice and TDD).

To file a complaint of program discrimination, write USDA Director, Office of Civil Rights, Room 326-W, Whitten Building, 14th and Independence Avenue, SW, Washington, DC 20250-9410, or call (202) 720-5964 (voice and TDD). USDA is an equal opportunity provider and employer.

DUGOUT GULCH BOTANICAL TRAIL

Trail Number 77



Bearlodge Ranger District

**Black Hills
National Forest**

