

Blanco Ranger District
220 E Market Street
Meeker, CO 81641
(970) 878-4039 - Voice
(970) 878-5173 - Fax



United States Department of Agriculture



SPRING CAVE TRAIL #1834

Difficulty: Moderate

Trail Use: Heavy

Length: .6 mile

Elevation: Starts 7,600 feet and ends 8,012 feet (highest point 8,012 feet)

Elevation Gain: +412 feet – 0 feet = +412 feet

Open To: HIKING, HORSEBACK RIDING

Access:

- The Spring Cave Trail is located 29 miles east of Meeker.
- From Meeker, take State Highway 13 east for 1 mile.
- Where Highway 13 turns north, turn east on Rio Blanco County Road 8 for 18 miles.
- Turn south on Rio Blanco County Road 10 for 2 miles, jog north for 1/4 mile, then east for 10 miles to the South Fork Campground and trailhead.

Trail Highlights:

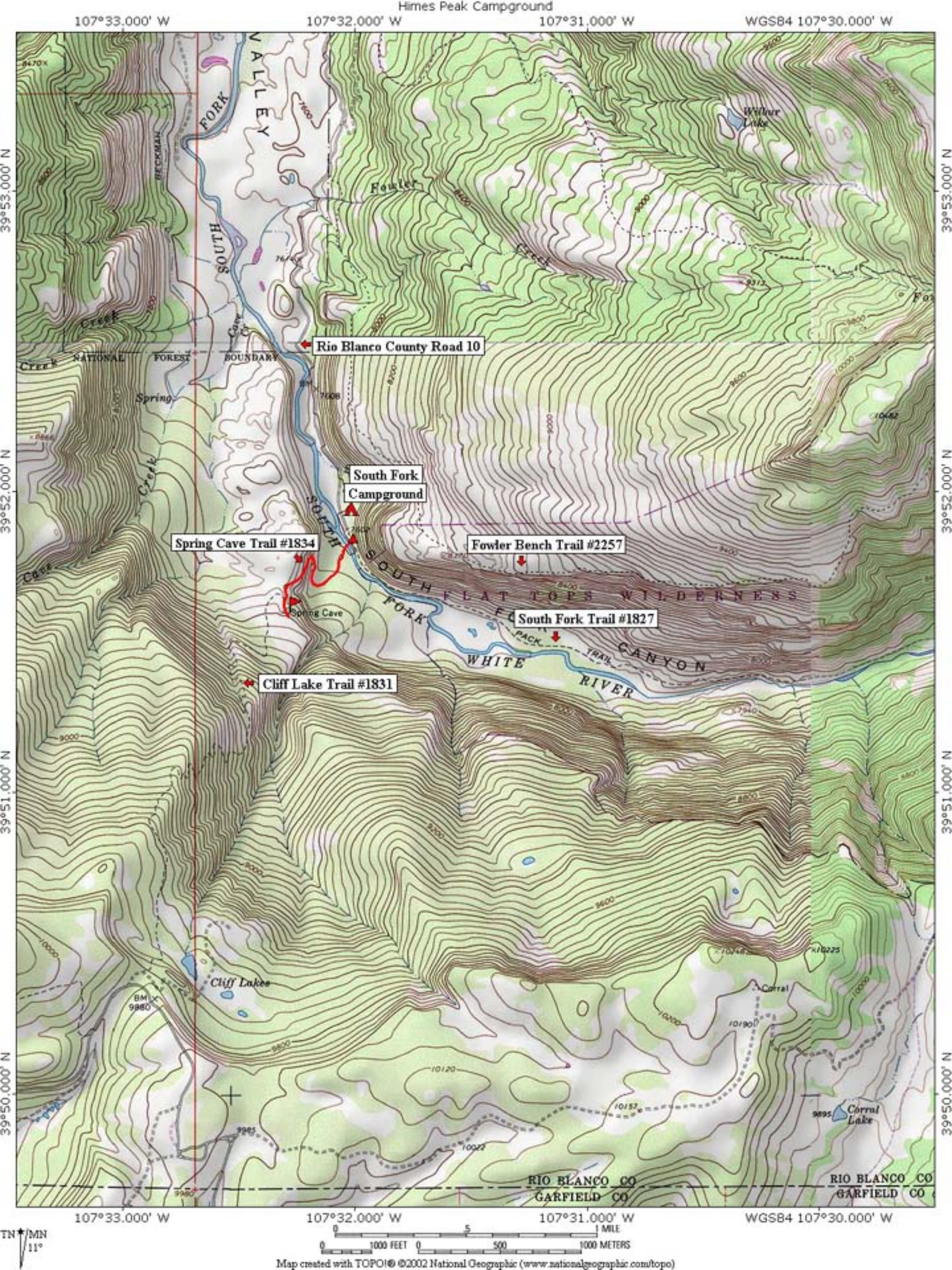
The Spring Cave Trail starts out crossing the South Fork of the White River by foot bridge. The trail then travels through a stand of blue spruce changing to aspen and finally scrub oak as you start climbing toward Spring Cave. The trail makes several switchbacks before leveling the last 1/8 of a mile to the cave.

Important Information:

- **THIS TRAIL IS USED FOR MULTIPLE ACTIVITIES INCLUDING HIKING AND HORSEBACK RIDING. PLEASE RESPECT OTHER USERS.**
- **DOMESTIC CATTLE MAY BE GRAZING IN THE AREA.**

PACK IT IN - PACK IT OUT!! LEAVE NO TRACE!!

THIS MAP IS INTENDED FOR USE AS A GENERAL GUIDE ONLY, NOT FOR ACTUAL LAND NAVIGATION. THE WHITE RIVER NATIONAL FOREST STRONGLY SUGGESTS PURCHASING A TOPOGRAPHIC TRAIL MAP AND COMPASS PRIOR TO BEGINNING AN OFF-HIGHWAY VEHICLE TRIP.



107°33.000' W

107°32.000' W

107°31.000' W

WGS84 107°30.000' W

39°53.000' N

39°53.000' N

39°52.000' N

39°52.000' N

39°51.000' N

39°51.000' N

39°50.000' N

39°50.000' N

107°33.000' W

107°32.000' W

107°31.000' W

WGS84 107°30.000' W

TN MN
11°

