



Order No. 19-15-02
USDA Forest Service
Lake Tahoe Basin Management Unit
Carnelian Hazardous Fuels Reduction and Healthy Forest Restoration Project

Pursuant to 16 USC 551 and 36 CFR 261.50(a), and to provide for public safety, the following acts are prohibited within the Lake Tahoe Basin Management Unit. This Order is effective every day from 7:00 a.m. to 6:00 p.m., June 13, 2015, through October 15, 2015.

1. Going into or being upon Unit 1, Unit 3, and Unit 4 of the Carnelian Hazardous Fuels Reduction and Healthy Forest Restoration Project, as described on Exhibit A and shown on the attached map. 36 CFR 261.53(e).
2. Being on any National Forest System road within Unit 1, Unit 3, and Unit 4 of the Carnelian Hazardous Fuels Reduction and Healthy Forest Restoration Project, as shown on the attached map. 36 CFR 261.54(e).
3. Being on any National Forest System trail within Unit 1, Unit 3, and Unit 4 of the Carnelian Hazardous Fuels Reduction and Healthy Forest Restoration Project, as shown on the attached map. 36 CFR 261.55(a).

Pursuant to 36 CFR 261.50(e), the following persons are exempt from this Order:

1. Persons with a permit from the Forest Service specifically authorizing the otherwise prohibited act or omission.
2. Any Federal, State or local officer, or member of an organized rescue or fire fighting force in the performance of an official duty.
3. Persons with a contract from the Forest Service authorizing work on the Carnelian Hazardous Fuels Reduction and Healthy Forest Restoration Project are exempt from the prohibitions listed above to the extent authorized by the contract.

These prohibitions are in addition to the general prohibitions in 36 CFR Part 261, Subpart A.

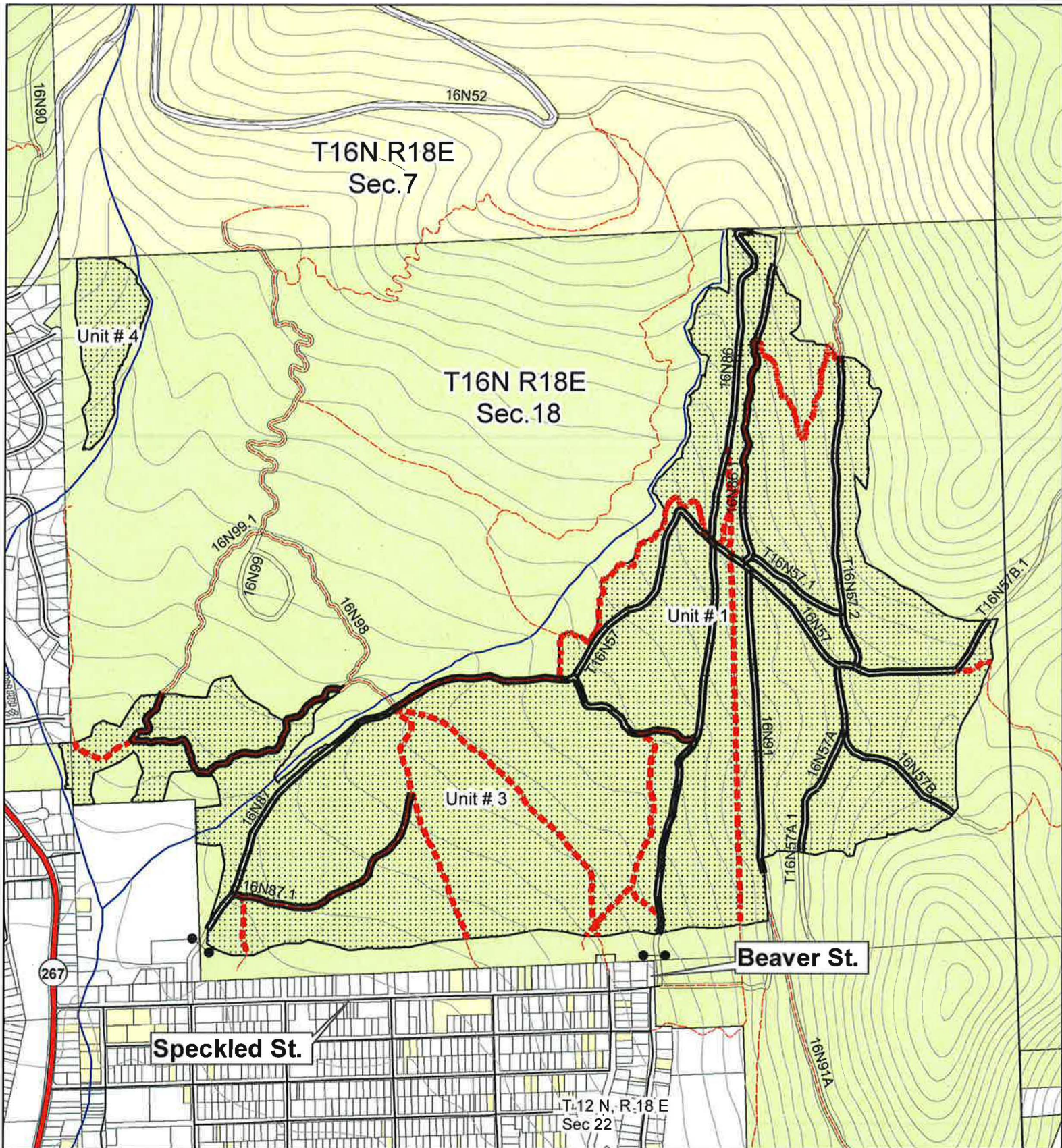
A violation of these prohibitions are punishable by a fine of not more than \$5,000 for an individual or \$10,000 for an organization, or imprisonment for not more than six months, or both. 16 USC 551 and 18 USC 3559, 3571, and 3581.

Done at South Lake Tahoe, California, this 12th day of June, 2015.



JEFF MARSOLAIS

Forest Supervisor, Lake Tahoe Basin Management Unit



Project Area Closure
Units 1, 3, 4
Order # 19-15-02

0 0.125 0.25 0.5 Miles



Legend

- | | | |
|-------------------|----------------|---------------------|
| Closure Area | NF System Road | Waterbody |
| 40 ft contour | Highway | Swamp/Marsh |
| Ownership | Local Road | Perennial Stream |
| US Forest Service | Trail | Intermittent Stream |
| State | Closed Roads | Ephemeral Stream |
| Other | Closed Trails | |
| | Gate | |



Order No. 19-15-02
USDA Forest Service
Lake Tahoe Basin Management Unit
Carnelian Hazardous Fuels Reduction and Healthy Forest Restoration Project
Exhibit A

The boundary of Unit 1 begins at a point 200 feet north of the intersection of Forest Road No. 16N86 and the southern section line of Section 18, Township 16 North, Range 18 East, Mount Diablo Base and Meridian, then continues north along Forest Road No. 16N86 to its intersection with Forest Road No. 16N87, then continues west along Forest Road No. 16N87 to its intersection with Forest Trail No. 18E18C, then continues northeast along Forest Trail No. 18E18C, then continues 187 feet northwest at a 324 degree angle to an unnamed creek, then continues northeast 2,432 feet along the unnamed creek to the northern section line of Section 18, Township 16 North, Range 18 East, MDBM, then continues due east 150 feet along the northern section line of Section 18, Township 16 North, Range 18 East, MDBM, then continues 282 feet southeast at a 103 degree angle, then continues due south 705 feet, then continues 563 feet southeast at a 114 degree angle, then continues due south 1447 feet, then continues 1020 feet southeast at a 115 degree angle, then continues 1445 feet southwest at a 193 degree angle to Forest Road No. 16N57B, then continues southwest at a 258 degree angle to Forest Road No. 16N91, then continues due south 460 feet along Forest Road No. 16N91, then continues due west back to the starting point.

The boundary of Unit 3 begins at a point 200 feet north of the intersection of Forest Road No. 16N86 and the southern section line of Section 18, Township 16 North, Range 18 East, Mount Diablo Base and Meridian, then continues north along Forest Road No. 16N86 to its intersection with Forest Road No. 16N87, then continues west along Forest Road No. 16N87 .57 miles, then continues across an unnamed creek 900 feet northeast at a 36 degree angle, then continues due west 2378 feet to the Forest boundary, then continues due south to the Forest boundary, then continues east to the western section line of Section 18, Township 16 North, Range 18 East, MDBM, then continues 118 feet due south along the western section line of Section 18, Township 16 North, Range 18 East, MDBM, then continues east 887 feet along the Forest Boundary, then continues due south 1086 feet, then continues east back to the starting point.

The boundary of Unit 4 begins at a point 130 feet east of the northwestern section corner of Section 18, Township 16 North, Range 18 East, Mt Diablo Base and Meridian on the northern section line of Section 18, Township 16 North, Range 18 East, MDBM, then continues due south 1,430 feet, then continues 75 feet east to Griff Creek, then continues northeast 1,155 feet along Griff Creek, then continues northwest 407 feet at a 321 degree angle to the northern section line of Section 18, Township 16 North, Range 18 East, MDBM, then continues west 407 feet along the northern section line of Section 18, Township 16 North, Range 18 East, MDBM, to the starting point.