

# Glacier Expedition

## MENDENHALL GLACIER VISITOR CENTER

### Greetings Explorers!

The U.S. Forest Service needs your help unlocking the secrets of the glacier. Follow the numbers on the map and answer the question at each stop.



1

Many years ago the glacier covered the exact spot you're standing on. When the ice melted it revealed many clues it was once here.

Can you spot two clues from the Pavilion? Write them below.




---



---



---

2

A chunk of ice breaks off the glacier. This is called calving. The piece that breaks off is now an iceberg floating in the lake.

Walk down to the lake shore. How many icebergs do you see? Draw your favorite iceberg.



3

Gravity, steep mountains and the weight of ice make the glacier flow like a slow river. As it moves over the rocks it changes them.

Walk to Photo Point. Look at the rocks and describe what you see.



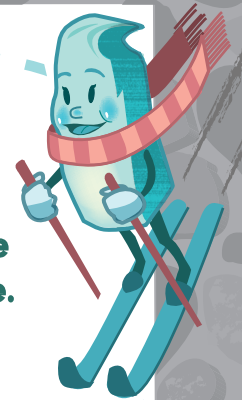

---



---



---



4

The Mendenhall Glacier was formed thousands of years ago during the last ice age.

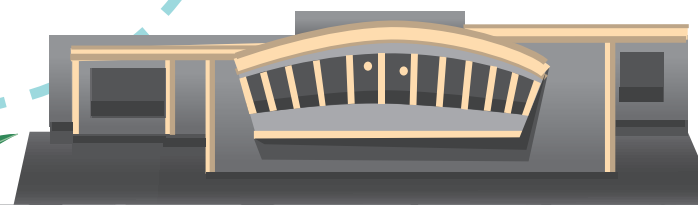
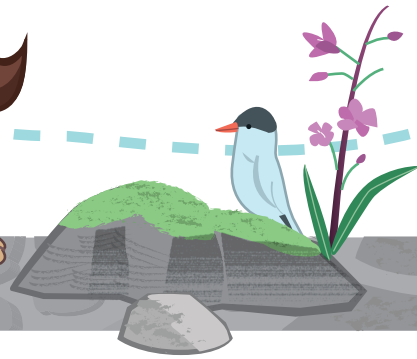
Find the secret glacier recipe in the Visitor Center and write the two ingredients below.




---



---



JUNEAU, ALASKA

Good Job!

Before you leave, show your work to a ranger and become a member of the Glacier Expedition Club.



# TAKE THE *Wendenhall* HOME!

Now that you're an official member of the Glacier Expedition Club, use your knowledge to complete these take home expeditions. Share your adventures with friends back home!

## DRAW THE Expedition

In the past, explorers drew pictures to record their adventures. Draw your favorite memory of your visit to the Mendenhall Glacier Visitor Center.



## A-MAZE-ING Glaciers!

How can something as small as a snowflake help create something so big? Follow the path snowflakes take to become a glacier, from snowfall in the icefield to the calving of icebergs below.

## Steep Creek SHUFFLE

Steep Creek attracts many animal visitors. Every year salmon swim upstream to spawn providing a meal for many animals. Unscramble the names of the animals that visit Steep Creek. Write your answers on the lines provided.

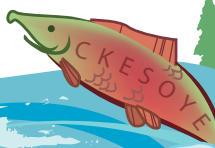
---



---



---



## How to make A GLACIER

**OH NO!** The steps to make a glacier somehow got mixed up! Help fix this list by numbering each step in the correct order below.

- **Ice Calves**  
Ice reaches the face of the glacier and breaks off forming icebergs. Ice breaking off the glacier is called calving.
- **Snow Falls**  
Snowfall collects on the mountain in an area called the accumulation zone.
- **Ice Moves**  
As the ice grows it begins to move down the mountain. The ice cracks creating crevasses.
- **Ice Forms**  
The snow compacts over many years creating glacial ice.

FOR ANSWERS, VISIT  
[www.mendenhallglacier.net](http://www.mendenhallglacier.net)

