

Tongass National Forest Land and Resource Management Plan

Land Use Designations

January 2015

Land Use Designations

WILDERNESS AND NATIONAL MONUMENT

- Wilderness and Wilderness National Monument - Preserve essentially unmodified areas to provide opportunities for solitude and primitive recreation. Limit motorized access.
- Non-Wilderness National Monument - Facilitate the development of mineral resources in a manner compatible with the National Monument purposes.

MOSTLY NATURAL SETTING

- LUD II - Maintain the wildland characteristics of these congressionally-designated unroaded areas. Permit fish and wildlife improvements and primitive recreation facilities.
- Old-Growth Habitat - Maintain old-growth forests in a natural or near-natural condition for wildlife and fish habitat.
- Research Natural Area - Manage areas for research and education and/or to maintain natural diversity on National Forest System Lands.
- Semi-Remote Recreation - Provide for recreation and tourism in natural-appearing settings where opportunities for solitude and self-reliance are moderate to high.
- Remote Recreation - Provide for recreation in remote natural settings outside Wilderness, where opportunities for solitude and self-reliance are high.
- Municipal Watershed - Manage municipal watersheds to meet State water quality standards for domestic water supply.
- Special Interest Area - Preserve areas with unique archaeological, historical, scenic, geological, botanical, or zoological values.
- Wild, Scenic, or Recreational River - Maintain and enhance the outstandingly remarkable values of river segments which qualify the river to be classified as a Wild, Scenic, or Recreational River.

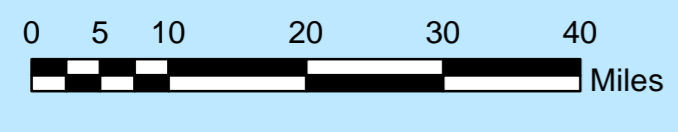
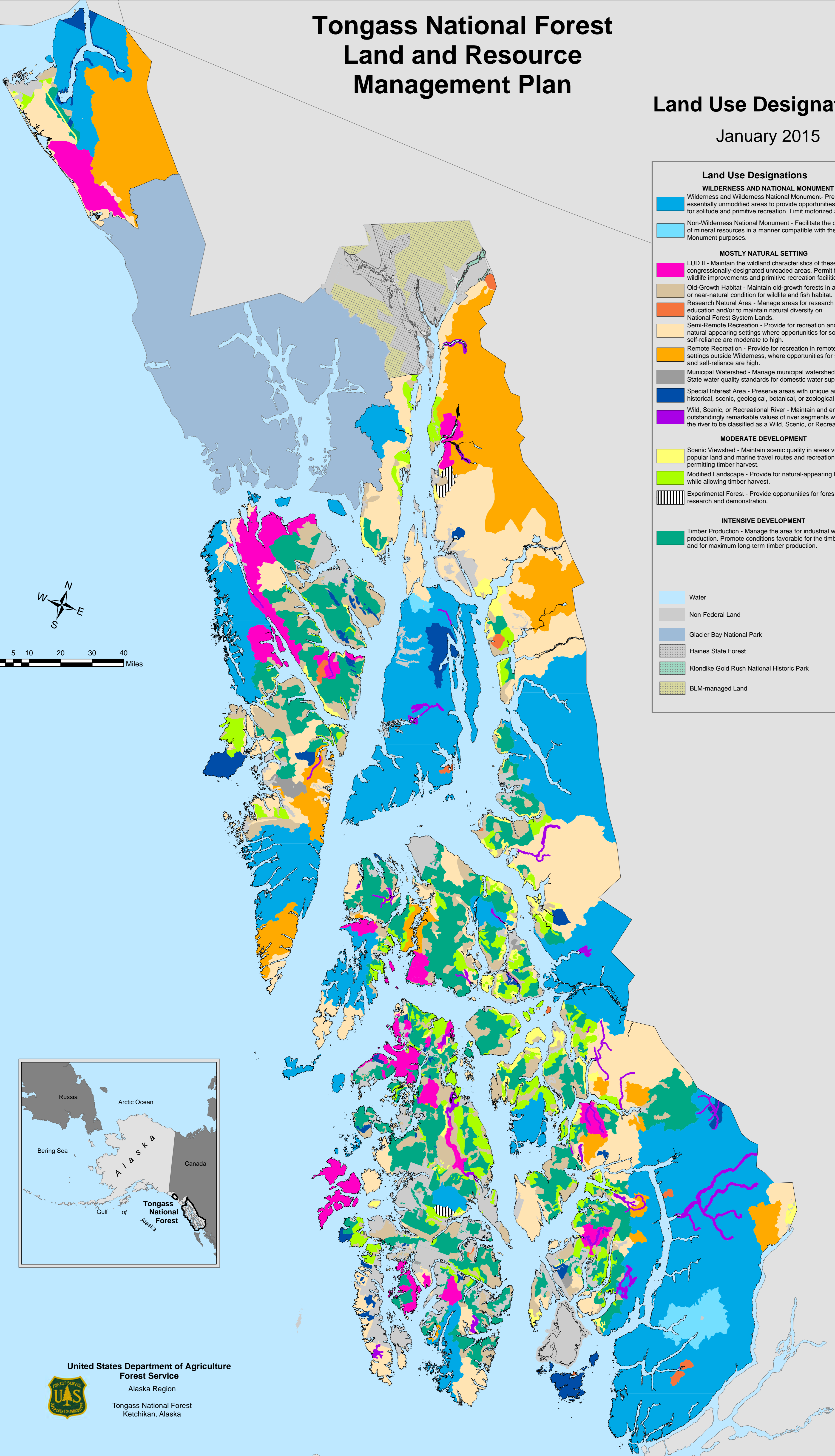
MODERATE DEVELOPMENT

- Scenic Viewshed - Maintain scenic quality in areas viewed from popular land and marine travel routes and recreation areas, while permitting timber harvest.
- Modified Landscape - Provide for natural-appearing landscapes while allowing timber harvest.
- Experimental Forest - Provide opportunities for forest practices research and demonstration.

INTENSIVE DEVELOPMENT

- Timber Production - Manage the area for industrial wood production. Promote conditions favorable for the timber resource and for maximum long-term timber production.

- Water
- Non-Federal Land
- Glacier Bay National Park
- Haines State Forest
- Klondike Gold Rush National Historic Park
- BLM-managed Land



United States Department of Agriculture
Forest Service
Alaska Region
Tongass National Forest
Ketchikan, Alaska

