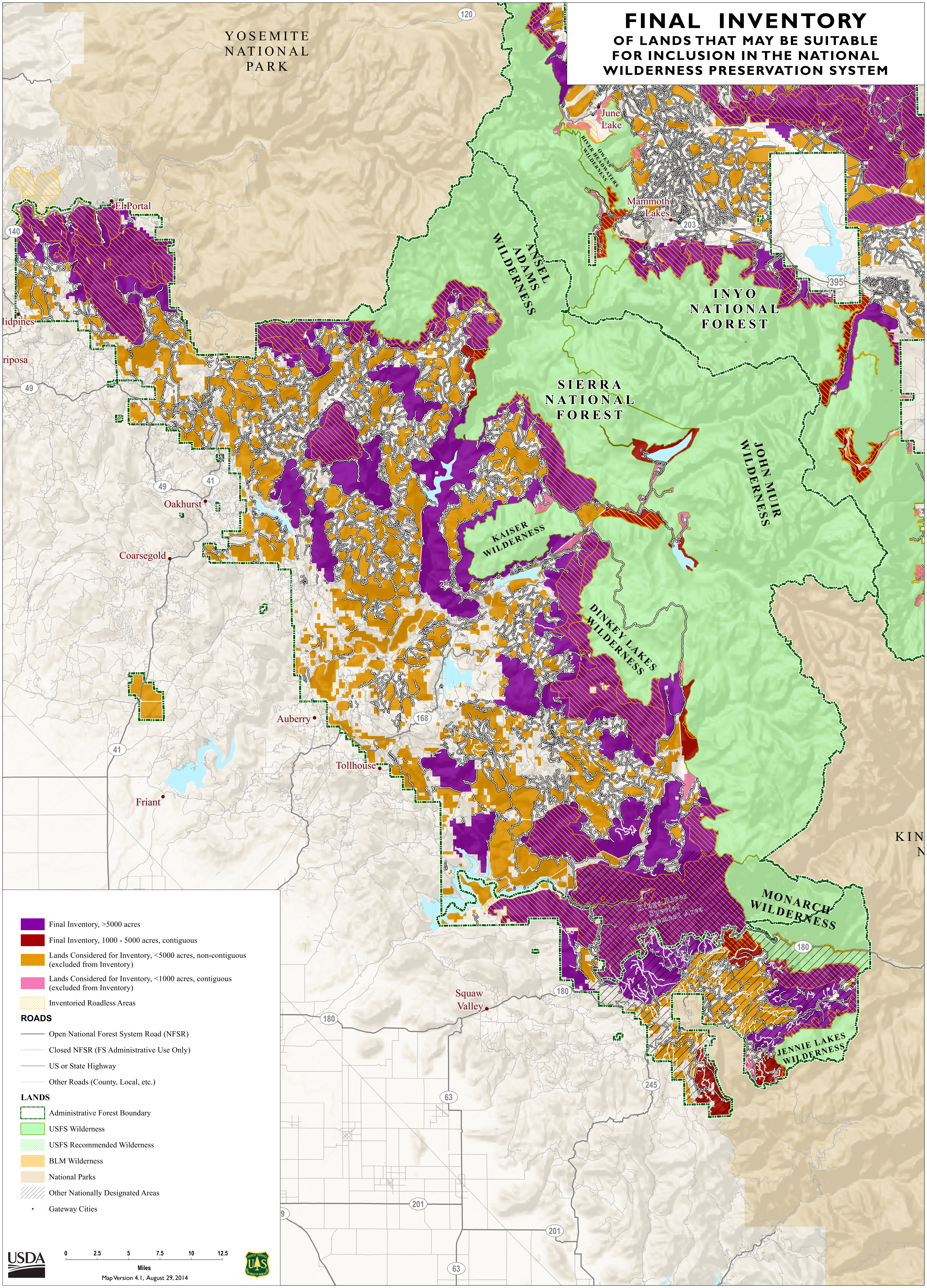


FINAL INVENTORY OF LANDS THAT MAY BE SUITABLE FOR INCLUSION IN THE NATIONAL WILDERNESS PRESERVATION SYSTEM

YOSEMITE
NATIONAL
PARK



- Final Inventory, >5000 acres
- Final Inventory, 1000 - 5000 acres, contiguous
- Lands Considered for Inventory, <5000 acres, non-contiguous (excluded from Inventory)
- Lands Considered for Inventory, <1000 acres, contiguous (excluded from Inventory)
- Inventoried Roadless Areas

- ROADS**
- Open National Forest System Road (NFSR)
 - Closed NFSR (FS Administrative Use Only)
 - US or State Highway
 - Other Roads (County, Local, etc.)

- LANDS**
- Administrative Forest Boundary
 - USFS Wilderness
 - USFS Recommended Wilderness
 - BLM Wilderness
 - National Parks
 - Other Nationally Designated Areas
 - Gateway Cities

Sierra National Forest

This map, developed by the USDA Forest Service, shows the final inventory of lands that may be suitable for inclusion in the National Wilderness Preservation System for the Sierra National Forest. The title is shown on the top right corner of the map. The map displays an area that is generally located along the western side of the southern Sierra Nevada mountain range in California. Yosemite National Park is located near the top left or northwest corner of the map. The northern portion of the Sequoia National Forest and a portion of Kings Canyon National Park are located near the bottom right or southeast corner of the map. Running north to south, the gateway cities of Midpines, Oakhurst, Coarsegold, Auberry, and Tollhouse lie near the western boundary of the Sierra National Forest. The Inyo National Forest lies along the eastern boundary of the Sierra National Forest. The underlying map is a shaded relief map. National Forest System roads, U.S. and state highways, and other roads, are displayed on the map. There are several types of categories and land designations that are explained in a legend located on the bottom left corner of the map. The categories displayed as part of the inventory include: lands in the final inventory, lands considered for the inventory but excluded, and inventoried roadless areas. The land designations displayed include: USFS, USFS wilderness, USFS recommended wilderness, BLM wilderness, national parks, and other nationally designated areas. On the eastern portion of the Sierra National Forest is the Ansel Adams Wilderness at the northern end, followed by the John Muir, Kaiser, Dinkey Lakes, and Monarch Wildernesses. Several inventoried roadless areas and other areas where roads are largely absent are greater than 5000 acres and included as part of the wilderness inventory. These areas are generally located next to or near Yosemite National Park and existing USFS wilderness areas. In general, as you move further west from these areas, there are more roads throughout the landscape, and several areas less than 5000 acres and non-contiguous were considered but excluded from the inventory.