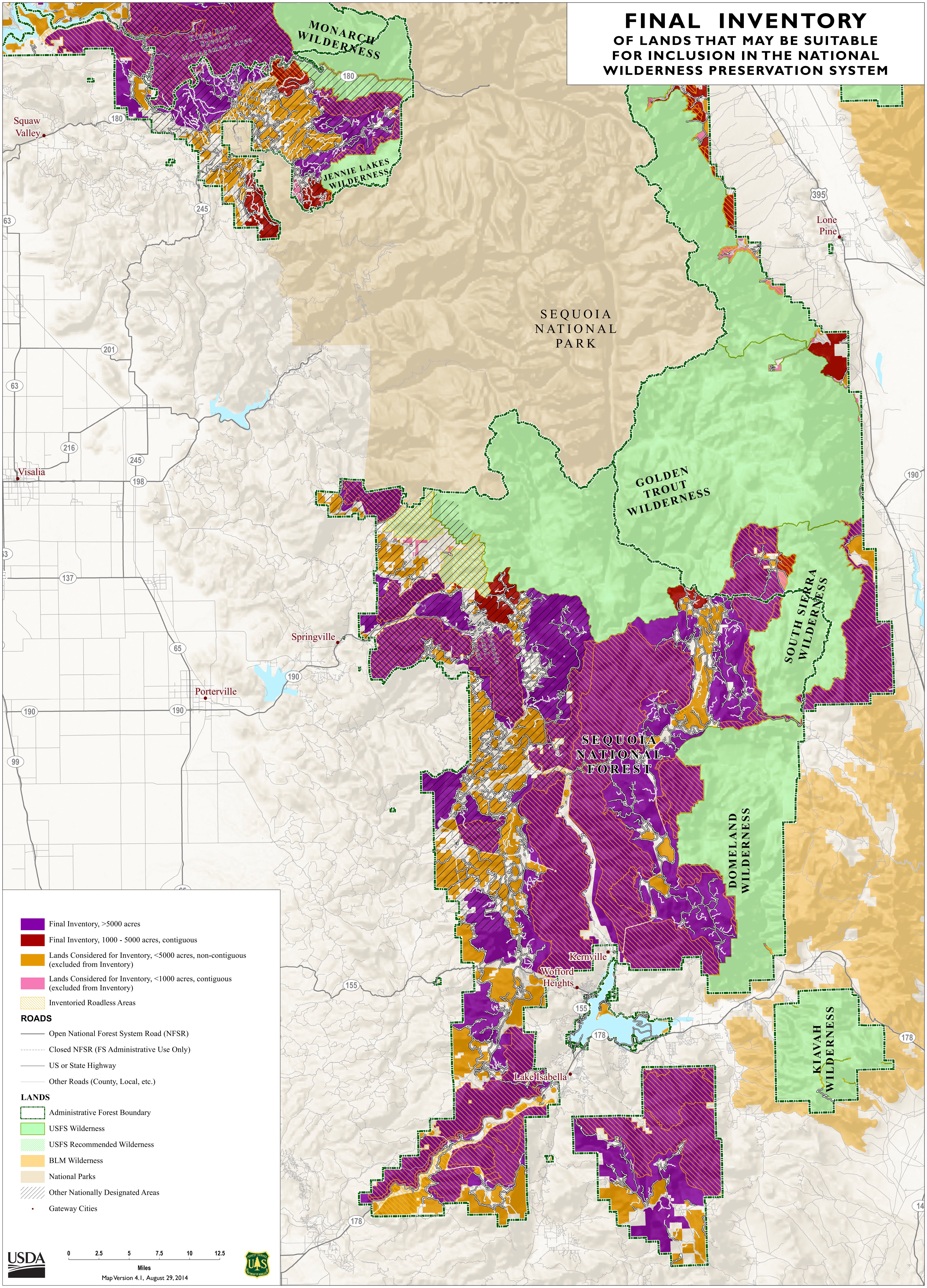


FINAL INVENTORY OF LANDS THAT MAY BE SUITABLE FOR INCLUSION IN THE NATIONAL WILDERNESS PRESERVATION SYSTEM



Squaw Valley

Visalia

Springville

Porterville

Kernville

Wofford Heights

Lake Isabella

Lone Pine

- Final Inventory, >5000 acres
 - Final Inventory, 1000 - 5000 acres, contiguous
 - Lands Considered for Inventory, <5000 acres, non-contiguous (excluded from Inventory)
 - Lands Considered for Inventory, <1000 acres, contiguous (excluded from Inventory)
 - Inventoried Roadless Areas
- ROADS**
- Open National Forest System Road (NFSR)
 - Closed NFSR (FS Administrative Use Only)
 - US or State Highway
 - Other Roads (County, Local, etc.)
- LANDS**
- Administrative Forest Boundary
 - USFS Wilderness
 - USFS Recommended Wilderness
 - BLM Wilderness
 - National Parks
 - Other Nationally Designated Areas
 - Gateway Cities

Sequoia National Forest

This map, developed by the USDA Forest Service, shows the final inventory of lands that may be suitable for inclusion in the National Wilderness Preservation System for the Sequoia National Forest. The title is shown on the top right corner of the map. The map displays an area that is generally located along the western side of the southern Sierra Nevada mountain range in California. The northern portion of the Sequoia National Forest is located near the top left or northwest corner of the map. Sequoia National Park is located southeast of this northern portion, followed by the southern portion of the Forest located at the bottom right hand side of the map. The southern part of the Inyo National Forest is located along the eastern side of Sequoia National Park and the northeastern side of the southern portion of the Sequoia National Forest. The gateway cities of Squaw Valley, Visalia, Porterville, and Springville lie near the western boundary of the Sequoia National Forest. The gateway cities of Kernville, Wofford Heights, and Lake Isabella are located at the southern end of the Sequoia National Forest. The underlying map is a shaded relief map. National Forest System roads, U.S. and state highways, and other roads, are displayed on the map. There are several types of categories and land designations that are explained in a legend located on the bottom left corner of the map. The categories displayed as part of the inventory include: lands in the final inventory, lands considered for the inventory but excluded, and inventoried roadless areas. The land designations displayed include: USFS, USFS wilderness, USFS recommended wilderness, BLM wilderness, national parks, and other nationally designated areas. The Monarch and Jennie Lakes Wildernesses are located on the eastern side of the northern portion of the Sequoia National Forest. Some areas in this northern portion, mainly around the outer ring of the Giant Sequoia National Monument, are included in the wilderness inventory. The Golden Trout Wilderness is located on the north side of the southern portion of the Sequoia National Forest. The South Sierra, Domeland, and Kiavah Wilderness are located on the eastern side of the Forest. In this southern portion, several inventoried roadless areas and other areas where roads are largely absent are greater than 5000 acres and included as part of the wilderness inventory. These areas are generally located next to or near existing Forest Service and BLM wilderness areas. In general, as you move further toward the western and southern boundaries of the forest, there are more roads throughout the landscape, and several areas less than 5000 acres and non-contiguous were considered but excluded from the inventory. Areas around Lake Isabella were excluded from the inventory.