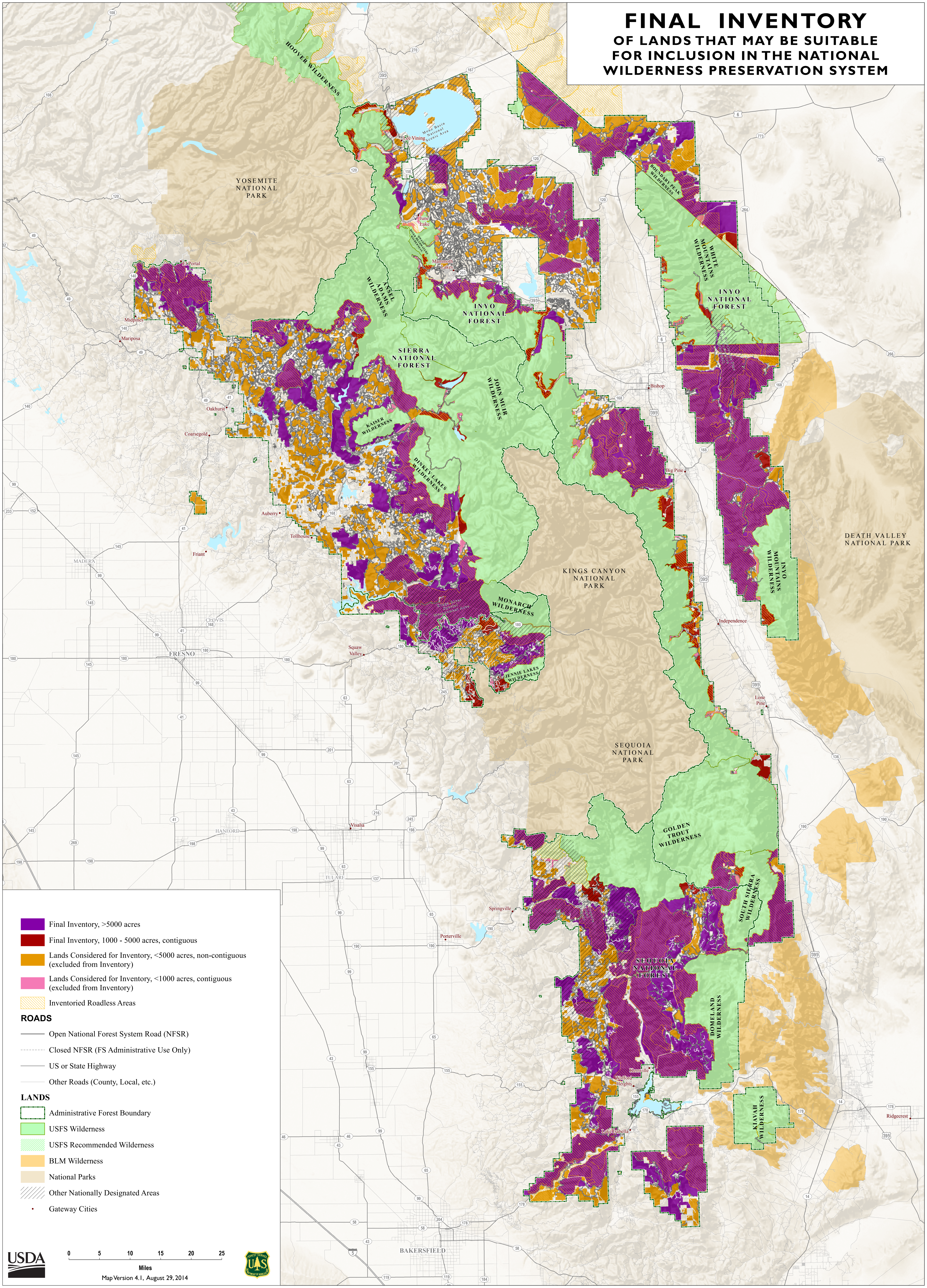


FINAL INVENTORY OF LANDS THAT MAY BE SUITABLE FOR INCLUSION IN THE NATIONAL WILDERNESS PRESERVATION SYSTEM



- Final Inventory, >5000 acres
 - Final Inventory, 1000 - 5000 acres, contiguous
 - Lands Considered for Inventory, <5000 acres, non-contiguous (excluded from Inventory)
 - Lands Considered for Inventory, <1000 acres, contiguous (excluded from Inventory)
 - Inventoried Roadless Areas
- ROADS**
- Open National Forest System Road (NFSR)
 - Closed NFSR (FS Administrative Use Only)
 - US or State Highway
 - Other Roads (County, Local, etc.)
- LANDS**
- Administrative Forest Boundary
 - USFS Wilderness
 - USFS Recommended Wilderness
 - BLM Wilderness
 - National Parks
 - Other Nationally Designated Areas
 - Gateway Cities

Overview map of the three-forest area

This map, developed by the USDA Forest Service, shows the final inventory of lands that may be suitable for inclusion in the National Wilderness Preservation System for the Inyo, Sequoia, and Sierra National Forests. The title is shown on the top right corner of the map. The map displays an area that is generally located in the southern Sierra Nevada mountain range in California and that extends slightly east into Nevada. Yosemite National Park is located near the top left or northwest corner of the map. Moving down and right on the map, you find the Sierra National Forest, followed by Kings Canyon and Sequoia National Parks, and the Sequoia National Forest. The Sequoia National Forest is located near the bottom right or southeast corner of the map. The Inyo National Forest is located along the eastern boundary of these national parks and forests. A small portion of the Inyo National Forest extends into Nevada. There is a north-south gap in the forest where Highway 395 and communities such as Bishop, Big Pine, and Independence are located. The gap continues north of Bishop on Highways 6 and 120. Death Valley National Park is shown at the southeast edge of the Inyo National Forest. The underlying map is a shaded relief map. National Forest System roads, U.S. and state highways, and other roads, are displayed on the map, along with gateway cities to the area. There are several types of categories and land designations that are explained in a legend located on the bottom left corner of the map. The categories displayed as part of the inventory include: lands in the final inventory, lands considered for the inventory but excluded, and inventoried roadless areas. The land designations displayed include: USFS, USFS wilderness, USFS recommended wilderness, BLM wilderness, national parks, and other nationally designated areas. Several USFS wilderness areas are located along the eastern side of the Sierra and Sequoia National Forests and western side of the Inyo National Forest, following the crest of the Sierra Nevada range. Going generally north to south, these include the following wilderness areas: Hoover, Ansel Adams, Owens River Headwaters, John Muir, Kaiser, Dinkey Lakes, Monarch, Jennie Lakes, Golden Trout, South Sierra, Domeland, and Kiavah. BLM wilderness is located near these southern Forest Service wilderness areas. On the eastern portion of the Inyo National Forest, northeast of the city of Bishop, is the White Mountains Wilderness. The Boundary Peak Wilderness is located just north of the White Mountains Wilderness in Nevada. The Inyo Mountains Wilderness is located east of the city of Independence, sharing a boundary with Death Valley National Park. BLM wilderness areas are located along the northern and western border of Death Valley National Park, connecting to the Inyo National Forest. Several areas near or connected to existing USFS wilderness have been identified as being part of the inventory. These areas often overlap with inventoried roadless areas. Several areas further away from existing USFS wilderness and where there are more roads have been identified as lands considered for the inventory but excluded.