

Ninebark Timber Sale Area Map

Newport Ranger District, Colville National Forest

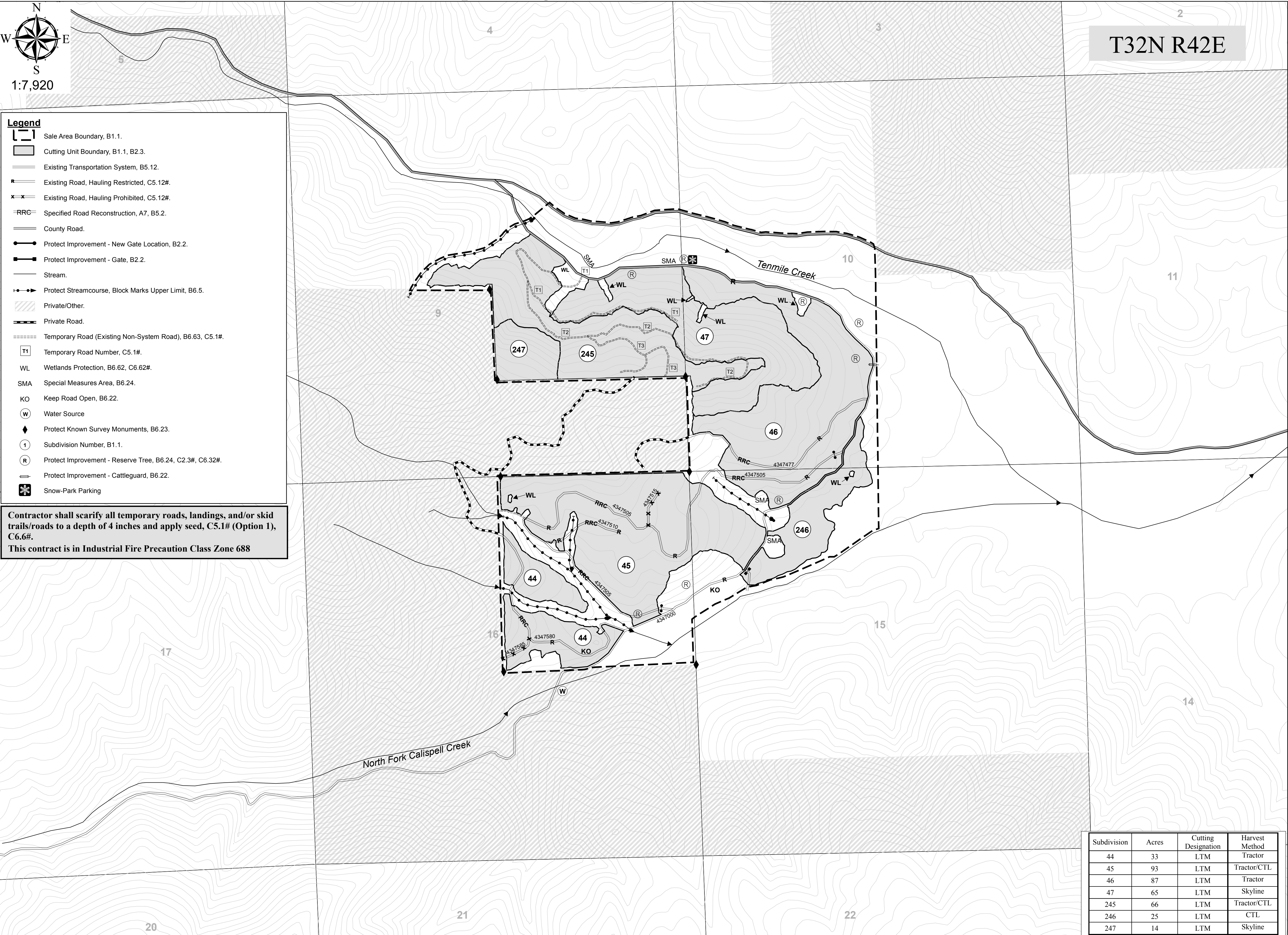
T32N R42E



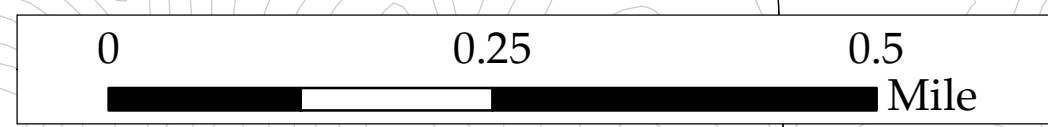
Legend

- Sale Area Boundary, B1.1.
- Cutting Unit Boundary, B1.1, B2.3.
- Existing Transportation System, B5.12.
- Existing Road, Hauling Restricted, C5.12#.
- Existing Road, Hauling Prohibited, C5.12#.
- Specified Road Reconstruction, A7, B5.2.
- County Road.
- Protect Improvement - New Gate Location, B2.2.
- Protect Improvement - Gate, B2.2.
- Stream.
- Protect Streamcourse, Block Marks Upper Limit, B6.5.
- Private/Other.
- Private Road.
- Temporary Road (Existing Non-System Road), B6.63, C5.1#.
- Temporary Road Number, C5.1#.
- Wetlands Protection, B6.62, C6.62#.
- Special Measures Area, B6.24.
- Keep Road Open, B6.22.
- Water Source
- Protect Known Survey Monuments, B6.23.
- Subdivision Number, B1.1.
- Protect Improvement - Reserve Tree, B6.24, C2.3#, C6.32#.
- Protect Improvement - Cattleguard, B6.22.
- Snow-Park Parking

Contractor shall scarify all temporary roads, landings, and/or skid trails/roads to a depth of 4 inches and apply seed, C5.1# (Option 1), C6.6#.
This contract is in Industrial Fire Precaution Class Zone 688



Subdivision	Acres	Cutting Designation	Harvest Method
44	33	LTM	Tractor
45	93	LTM	Tractor/CTL
46	87	LTM	Tractor
47	65	LTM	Skyline
245	66	LTM	Tractor/CTL
246	25	LTM	CTL
247	14	LTM	Skyline



Leave Tree Mark (LTM), B2.35, C2.35 (Option 1).
 Tractor Yarding Specified, B6.42, C6.42#
 Forwarder Yarding Specified, B6.42, C6.42#
 Skyline Yarding Specified, B6.42, C6.42#