



PCT Long-Distance Travelers Need to Know for Central Cascades Wilderness Permit Area

1. Do I need a Central Cascades Wilderness Permit (CCWP) while traveling through wilderness areas on the Deschutes and Willamette National Forest?

Long-distance PCT hikers and riders who have a Long-Distance Permit (500 miles or more) issued by the Pacific Crest Trail Association do not need Central Cascades Wilderness Permits. All other users of the PCT must obtain a Central Cascades Wilderness Permit.

2. Are there camping prohibitions specific to long-distance PCT hikers and riders?

Yes. PCT long-distance travelers must camp within a ½ mile corridor on either side of the PCT. Day use outside of this corridor is allowed.

Additionally, PCT travelers using a long-distance permit are prohibited from camping in these areas:

- Obsidian (Three Sisters Wilderness)
- North and South Matthieu Lakes (Three Sisters Wilderness)
- Coyote and Shale Lakes (Mt. Jefferson Wilderness)
- Jefferson Park (Mt. Jefferson Wilderness)

Please see the maps at the end of this document. **Attached maps do NOT include fire closure orders. Please visit the Willamette and Deschutes National Forest webpages for the latest on the Lionshead and Cedar Creek Fire Closures.

3. What if I want to travel less than 500 miles on the PCT, or not get a long-distance permit?

If you do not have a long-distance permit, you are required to get a Central Cascades Wilderness Permit (CCWP) through Recreation.gov. Travel between wilderness areas is allowed with a CCWP permit only at PCT trailheads.

4. Are there fire prohibitions?

Yes. Fires are prohibited above 5700 feet in the Three Sisters, Mt. Washington, and Mt. Jefferson Wilderness Areas and above 6000 feet in Diamond Peak Wilderness. There can also be seasonal fire prohibitions, so check with the Willamette or Deschutes National Forest offices for any updates.

5. Are PCT hikers and riders required to follow all other wilderness regulations?

Yes. Those regulations are available here:

<https://www.fs.usda.gov/detail/willamette/recreation/?cid=stelprdb5097165>

6. Is there anything else I need to know about the 2024 PCT season in Central Oregon?

Yes. There are fire closures in the vicinity of the Pacific Crest Trail, including some trailheads providing access to the PCT. However, the PCT is open for its entire length on the Willamette and Deschutes National Forests.

Closure area map can be found on the Willamette and Deschutes National Forest websites.

Willamette National Forest fire closure information:

<https://www.fs.usda.gov/alerts/willamette/alerts-notices/?aid=61574>

Deschutes National Forest fire closure information:

<https://www.fs.usda.gov/alerts/deschutes/alerts-notices/?aid=75334>

Mount Jefferson Wilderness Restricted Camping Areas for Long Distance Pacific Crest Trail Travelers

Mount Jefferson Wilderness

- PCT Camping
- Restricted Camping Area
- Pacific Crest Trail
- Trails

Ownership

- Bureau of Indian Affairs
- U.S. Forest Service
- Mount Jefferson Wilderness
- STP; State Land
- Private Individual or Company

0 0.5 1 2 3 4 5 Miles

**Use Leave No Trace practices
and camp 100 feet away from
the trail, but within the ½ mile
corridor on either side of the PCT.**

**Jefferson Park Zone -
No PCT Camping**

**Coyote Zone -
No PCT Camping**

**PCT long distance travelers required
to camp within this corridor inside of
Mount Jefferson Wilderness.**

Disclaimer

This product is reproduced from information prepared by the USDA, Forest Service or from other suppliers. The Forest Service cannot assure the reliability or suitability of this information for a particular purpose. The data and product accuracy may vary due to compilation from various sources, including modeling and interpretation, and may not meet National Map Accuracy Standards. This information may be updated, corrected or otherwise modified without notification. For more information contact: Deschutes NF Supervisors Office at 541-383-5300.




Mount Washington Wilderness Restricted Camping Areas for Long Distance Pacific Crest Trail Travelers

Disclaimer

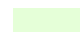
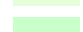
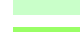

This product is reproduced from information prepared by the USDA, Forest Service or from other suppliers. The Forest Service cannot assure the reliability or suitability of this information for a particular purpose. The data and product accuracy may vary due to compilation from various sources, including modeling and interpretation, and may not meet National Map Accuracy Standards. This information may be updated, corrected or otherwise modified without notification. For more information contact:
Deschutes NF Supervisors Office at 541-383-5300.

PCT long distance travelers required to camp within this corridor inside of Mount Washington Wilderness.

Mount Washington Wilderness

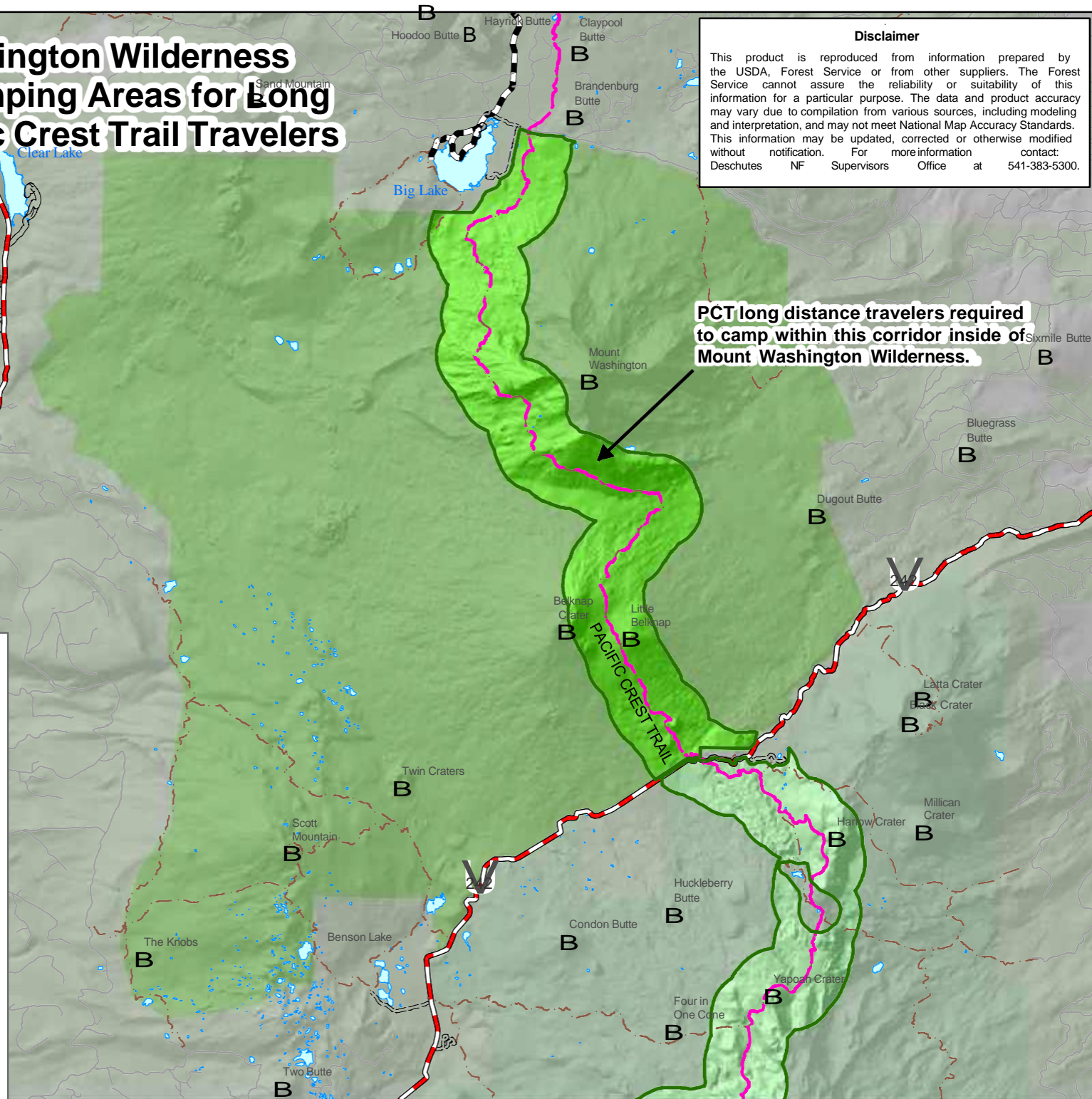
-  PCT Camping
-  Pacific Crest Trail
-  Trails

Ownership

-  U.S. Forest Service
-  Three Sisters Wilderness
-  Mount Washington Wilderness
-  Private Individual or Company

0 1 2 3 Miles

Use Leave No Trace practices and camp 100 feet away from the trail, but within the ½ mile corridor on either side of the PCT.



Disclaimer

This product is reproduced from information prepared by the USDA, Forest Service or from other suppliers. The Forest Service cannot assure the reliability or suitability of this information for a particular purpose. The data and product accuracy may vary due to compilation from various sources, including modeling and interpretation, and may not meet National Map Accuracy Standards. This information may be updated, corrected or otherwise modified without notification. For more information contact: Deschutes NF Supervisors Office at 541-383-5300.

Three Sisters Wilderness Restricted Camping Areas for Long Distance Pacific Crest Trail Travelers

