

United States Department of Agriculture

Forest Service

Alabama

2016

America's Great Outdoors

Talladega NF

Shoal Creek Rd

Motor Vehicle Use Map

VICINITY MAP

INFORMATION SOURCES

NATIONAL FORESTS IN ALABAMA
2946 Chestnut Street Montgomery, Alabama 36107-3010 334-632-4470

Shoal Creek Ranger District
45 Highway 281
Heflin, Alabama 36264
Office: 256-463-2272 or 256-463-2273
Work Center: 256-463-7208 or 256-463-4630

http://www.fs.usda.gov/alabama/
Forest Service Law Enforcement:
256-846-0374 or 334-850-5455

COUNTY SHERIFF'S OFFICES
Calhoun: 256-237-4721
Cherokee: 256-927-3629
Clay: 256-354-2176
Cleburne: 256-463-2277

treadlightly!
LEAVING A GOOD IMPRESSION

Travel and recreate with minimum impact.

Respect the environment and the rights of others.

Educate yourself plan and prepare before you go.

Allow for future use of the outdoors by leaving it better than you found it.

Discover the rewards of responsible recreation.

For more information on Tread Lightly!, go to www.treadlightly.org or call 1-800-966-9900.

In accordance with Federal civil rights law and U.S. Department of Agriculture (USDA) civil rights regulations and policies, the USDA, its Agencies, offices, and employees, and institutions participating in or administering USDA programs are prohibited from discriminating based on race, color, national origin, religion, sex, gender identity (including gender expression), sexual orientation, disability, age, marital status, family/parental status, income derived from a public assistance program, political beliefs, or reprisal or retaliation for prior civil rights activity, in any program or activity conducted or funded by USDA (not all bases apply to all programs). Remedies and complaint filing deadlines vary by program or incident. Persons with disabilities who require alternative means of communication for program information (e.g., Braille, large print, audiotape, American Sign Language, etc.) should contact the responsible Agency or USDA's TARGET Center at (202) 720-2600 (voice and TTY) or contact USDA through the Federal Relay Service at (800) 877-8339. Additionally, program information may be made available in languages other than English.

To file a program discrimination complaint, complete the USDA Program Discrimination Complaint Form, AD-3027, found online at http://www.ascr.usda.gov/complaint_filing_cust.html and at any USDA office or write a letter addressed to USDA and provide in the letter all of the information requested in the form. To request a copy of the complaint form, call (866) 632-9992. Submit your completed form or letter to USDA by: (1) mail: U.S. Department of Agriculture, Office of the Assistant Secretary for Civil Rights, 1400 Independence Avenue, SW, Washington, D.C. 20250-9410; (2) fax: (202) 690-7442; or (3) email: program.intake@usda.gov.

USDA is an equal opportunity provider, employer, and lender.

PURPOSE AND CONTENTS OF THIS MAP

The designations shown on this motor vehicle use map (MVUM) were made by the responsible official pursuant to 36 CFR 212.51, are effective as of the date on the front cover of this MVUM, and will remain in effect until superseded by next year's MVUM.

It is the responsibility of the user to acquire the current MVUM. This MVUM shows the National Forest System roads, National Forest System trails, and the areas on National Forest System lands in the Shoal Creek RD, Talladega National Forest that are designated for motor vehicle use pursuant to 36 CFR 212.51. This MVUM also identifies the vehicle classes allowed on each route and in each area, and any seasonal restrictions that apply on those routes and in those areas.

Designation of a road, trail, or area for motor vehicle use by a particular class of vehicle under 36 CFR 212.51 should not be interpreted as encouraging or inviting use or implying that the road, trail, or area is passable, actively maintained, or safe for travel. Motor vehicle designations include parking along designated routes and at facilities associated with designated routes when it is safe to do so and when not causing damage to National Forest System resources. Seasonal weather conditions and natural events may render designated roads and trails impassable for extended periods. Designated areas may contain dangerous or impassable terrain. Many designated roads and trails may be passable only by high-clearance vehicles or four-wheel-drive vehicles. Maintenance of designated roads and trails will depend on available resources, and many may receive little maintenance.

This motor vehicle use map identifies those roads, trails, and areas designated for the motor vehicle use under 36 CFR 212.51 for the purpose of enforcing the prohibition at 36 CFR 261.13. This is a limited purpose. The other public roads are shown for information and navigation purposes only and are not subject to designation under the Forest Service travel management regulation.

These designations apply only to National Forest System roads, National Forest System trails, and areas on National Forest System lands.

Legend

Roads Open to Highway Legal Vehicles

Trails Open to Wheeled Vehicles 50" or Less in Width

Special Vehicle Designation (See Table)

Seasonal Designation (See Table)

Interstate

Highways, U.S. State

Other Public Roads

705351 Short Route Identifier

Motorized Trailhead

Information Site

FS Campground

Picnic Area

Forest or Unit Boundary

National Forest System Lands

Non-National Forest System Lands within the National Forest

Wilderness Areas

Political Boundary

Township and Range Lines

Section Lines

Lakes and Rivers

0 0.5 1 2 3 4 Miles

N

EXPLANATION OF LEGEND ITEMS

Roads Open to Highway Legal Vehicles Only:

These roads are open only to motor vehicles licensed under State law for general operation on all public roads within the state.

Trails Open to Wheeled Vehicles 50" or less in Width:

These trails are open only to wheeled, motor vehicles less than 50 inches in width at the widest point on the vehicle.

Special Vehicle Designation:

This symbol indicates the road or trail is open to classes of vehicles other than those listed above. Refer to the Seasonal and Special Designation Table for further instructions.

Seasonal Designation:

This symbol, used in conjunction with one of the other road or trail symbols, indicates that the road or trail is open only during certain portions of the year. Refer to Seasonal and Special Designation Table for further instructions.

Other Public Roads and Trails:

Interstate

Highways, U.S. State

Other Public Roads

Other Public Trails

These symbols are used to show routes the Forest Service does not have jurisdiction over and has not designated for motorized use. These symbols are part of the reference layers showing connections to towns and cities outside the forest boundary.

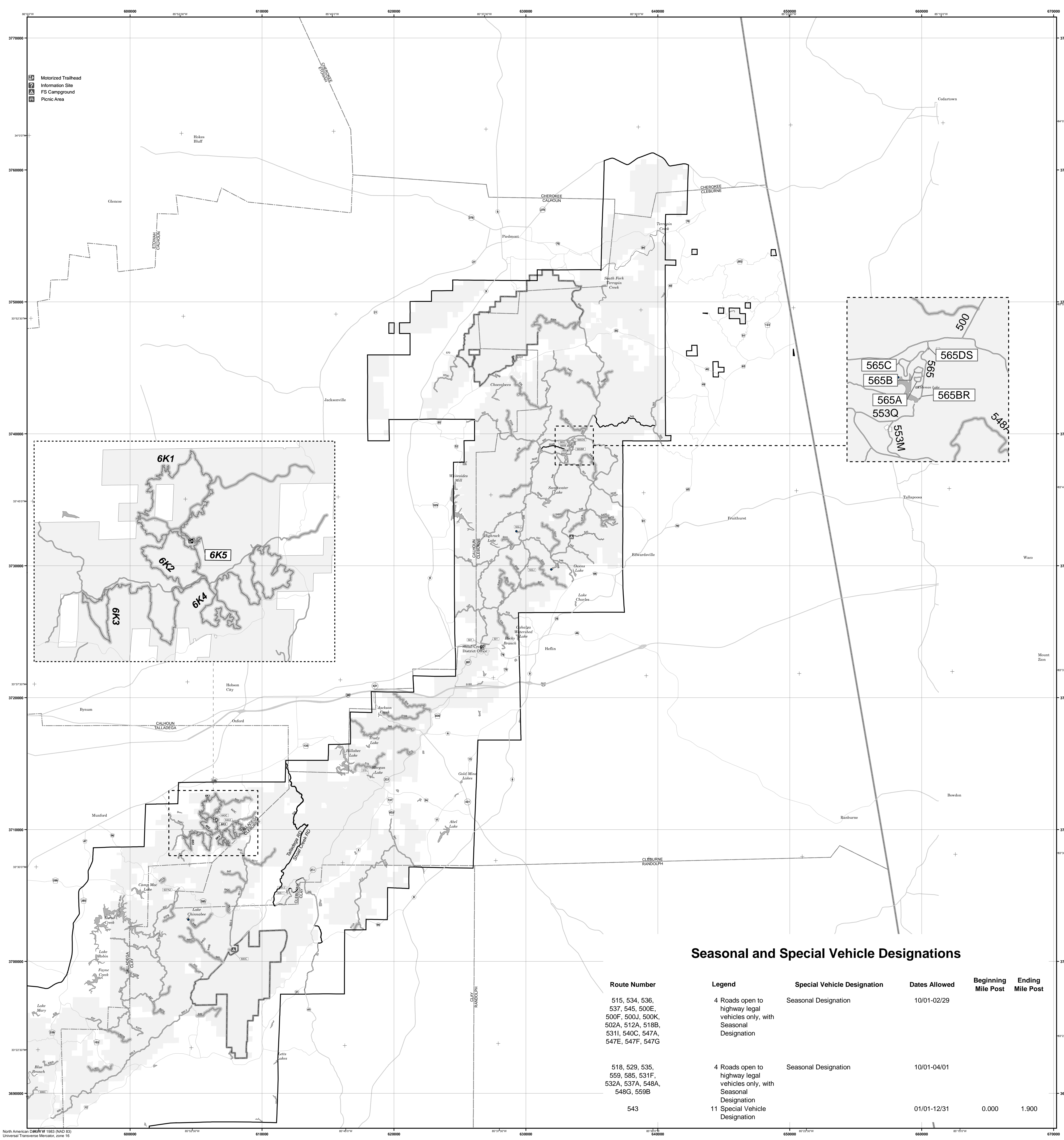
Short Route Identifier:

705351

This symbol is used for roads that are too short to show a symbol type on the map. This symbol contains the number of the road or trail. Users should refer to the corresponding number in the Short Route Table for designation information.

Motorized Trail Access:

This symbol indicates a trailhead for access to a motorized route. Not all motorized routes have trailheads and those that do may range from primitive to developed.



Route Number	Legend	Special Vehicle Designation	Dates Allowed	Beginning Mile Post	Ending Mile Post
515, 534, 536, 537, 545, 500E, 500F, 500J, 500K, 502A, 512A, 518B, 531I, 540C, 547A, 547E, 547F, 547G	4 Roads open to highway legal vehicles only, with Seasonal Designation	Seasonal Designation	10/01-02/29		
518, 529, 535, 559, 585, 531F, 532A, 537A, 548A, 548G, 559B	4 Roads open to highway legal vehicles only, with Seasonal Designation	Seasonal Designation	10/01-04/01		
543	11 Special Vehicle Designation		01/01-12/31	0.000	1.900